



# We Provide Water Solutions

Water Treatment | Wastewater Treatment | Water Management System



+61 (03) 7035 6313



info@igswater.com



www.igswater.com



IGS Asia Pacific,

Ground floor 470 St Kilda Rd

Melbourne, VIC 3004, AUS



# ABOUT US:

**IGS WATER (Intelli Global Solutions)** is an Australian-based company focused on delivering smart, sustainable water treatment systems for land and water managers.

- We specialise in **nanobubble technology** and advanced water solutions that support:
- Healthier turf and soil biology
- Cleaner, more oxygenated water bodies
- Reduced reliance on chemical treatments
- Lower long-term maintenance and energy costs

Our clients include **golf courses, agricultural operations, local councils, equine and sports facilities, hydroponics, fisheries and dam or pond owners** seeking better water quality and landscape resilience.

Whether it's **boosting turf root health, restoring algae-affected ponds, or increasing irrigation water efficiency**, IGS WATER delivers results you can measure — naturally.

## WHAT WE STAND FOR IGS

Water stands for practical sustainability in water management. We are committed to applying technology responsibly to improve water quality, optimise resource use, and reduce environmental impact in water-intensive industries. Our approach prioritises measurable results, long-term thinking, and partnerships that enable more sustainable water operations — not just in theory, but in day today practice.



+61 (03) 7035 6313



info@igswater.com



www.igswater.com



IGS Asia Pacific,

Ground floor 470 St Kilda Rd

Melbourne, VIC 3004, AUS

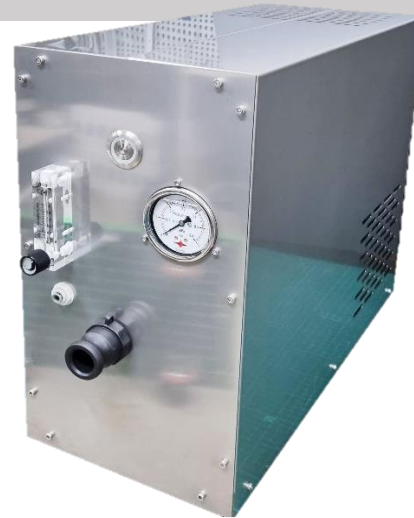


# OUR PRODUCTS:

Our main offerings mainly consist of water treatment solutions, including devices like Generators, Aerators, Water Filters, Electric Turf Equipment, Intelligent Sensors, and more. These products play a significant role in conserving water, as well as delivering improved water cleanliness and safety both residential and commercial areas.

## NANOBUBBLE GENERATORS

Incorporated to help many industries such as drinking water, wastewater treatment, lake remediation (Algae control), hydroponics, aquaculture, turf industry and many more.



## WATER CONDITIONERS

This unit is perfect for converting hard water into soft water by changing the mineral composition in the water. Also, this unit gets installed in the pipeline.

## ELECTRIC LAWN MOWER

Engineered exclusively for Golf Turf, deliver championship-level cut quality and unmatched turf consistency.



+61 (03) 7035 6313



info@igswater.com



www.igswater.com



IGS Asia Pacific,

Ground floor 470 St Kilda Rd

Melbourne, VIC 3004, AUS



## SILVER ION GENERATOR

Natural sterilizer than can eradicate more than 650 strong antimicrobial, anti-virus substances, and fungus.



## LIGHTNING PROTECTION SYSTEM (WXLINE)

Minimize the potential for human error and function in severe weather and a lightning environment.

## WATER QUALITY MEASURING TOOLS

It is designed to have that capability to remotely manage, collect and analyse the data to meet daily water quality standards.



## STATIC MIXER

It is used for the continuous mixing of fluid and gas into water streams.



+61 (03) 7035 6313



info@igswater.com



www.igswater.com



IGS Asia Pacific,

Ground floor 470 St Kilda Rd

Melbourne, VIC 3004, AUS





More Information: <https://www.igswater.com/products/nanobubble-generators/>

# Nanobubble Generator

Nanobubble technology is a technology that applies the shear resistance between the interface of an object and the adjacent area. The gas (e.g., oxygen) is split in a nano-sized bubbles by shear forces at the interface of the object which loses buoyancy of the bubbles that will rise to the surface, thereby keeping the dissolved gas concentration high in water.



\*Nanobubble unit for laboratory



- Within the nanobubble generator, the dissolved oxygen concentration increases by 6 mg/L compared to the raw water, and the dissolved oxygen solubility is more than 180%.
- When used in water temperature of 28°C, dissolved oxygen can be maintained more than 14 mg/L with only air.
- Using oxygen in the nanobubble generator increases dissolved oxygen concentration to more than 44 mg/L.
- The sealed nano-bubble remains intact after 30 days, and the nano-bubble has frozen water. It exists even after melting.

		Lab-Scale	003	005	010
Water Flow Rate		5~10L/min	3.0m³/hr	5m³/hr	10m³/hr
Nano Bubble Size		Avg. 160nm			
Nano Bubble Ratio		> 99%			
Nano Bubble Duration	Atmospheric Pressure State	> 18hr			
	Sealed State	> 30days			
Usage Gas		Air, Oxygen, Ozone, etc.			
Oxygen Flow Rate		0.2~0.4L/min	1~2L/min	3~4L/min	4~6L/min
Oxygen Trasnfer Efficiency		65 ~ 85%			
Dissolved Oxygen Con.	Gas : Air	> 13mg/L (at 28 °C)			
	Gas : Oxygen	> 40mg/L (at 28 °C)			
Required Pump Pressure		> 4.0 kgf/cm²			
Dimensions(Incl. Gas Gen)		-	W600mm x L1000mm x H1400mm		
Supply Voltage		110V~400V / 50, 60Hz			
Power	Pump	0.5~1.0kW	1.0~1.5kW	1.5~2.0kW	2.0~2.5kW
	Oxygen Generator	-	0.5kW	0.5kW	0.5kW
Materials	Pump	STS304 / STS316L (seawater)			
	Bubble Generator	STS304 / STS316 (seawater)			
	Housing	Al	STS304		
Pipe Connections Inlet, Outlet		Φ20	Φ25 ~ 32mm		

※ Specifications are subject to change without notice.



+61 (03) 7035 6313



info@igswater.com



www.igswater.com



IGS Asia Pacific,

Ground floor 470 St Kilda Rd

Melbourne, VIC 3004, AUS



More Information: <https://www.igswater.com/water-conditioner/>

# Water Conditioners



The IGS Water Conditioner works for you **24 hours 7 days a week**. It is affordable, effective and safe to use with no chemicals, no electricity, no salts, no maintenance, no refills and no further costs.



## Solve Irrigation & Hard Water Problems

Prevents equipment failure and reduces the scale build up in your equipment and treats the problem at the source. Treat hard bore or well water before it is pumped into your holding dam for your livestock and irrigation needs.

## Mining, Drilling & Swimming Pools

Hard water and drilling machines are never a good mix especially when the goal is to remove the largest amount of rock with the least amount of wear and tear on the drilling rig. If you want to spend more time in your pool rather than cleaning your pool then install an IGS Water Conditioner.



## Skin, Hair and Your Investments

Protect your household appliances and piping from common hard water problems, even your hair and skin will feel softer. Moreover, it will increase the life span of your fridge, dishwasher and steam oven and will protect it from scale build up.



+61 (03) 7035 6313



info@igswater.com



www.igswater.com



IGS Asia Pacific,

Ground floor 470 St Kilda Rd

Melbourne, VIC 3004, AUS



# Electric Lawn Mower

Designed for warm, humid, high-growth turf. These products deliver ultra-quiet performance ideal for resort environments. Its advanced electric systems reduce fuel logistics and on-course emissions while supporting the sustainability goals of premium golf resorts. Offering a lower total cost of ownership than traditional diesel equipment, they also support your ESG and sustainability goals—combining precision, efficiency, and environmental responsibility in every cut. Perfectly suited for Europe, Southeast Asia, Korea, and Japan.



## Greens Mower

- Precision greens mower for Golf and Sports Fields
- Height of cut: 1.6–8 mm
- Cutting width: 534 mm
- 48V 40Ah battery
- 3600 m<sup>2</sup> per charge
- Quiet, zero-emission operation

## Backpack Leaf Blower

- Electric Backpack Blower for Pathways & Greenways
- Airflow: 26 m<sup>3</sup>/min | Wind speed: 80 m/s
- Noise level: 60 dB @ 20 m
- Lightweight, ergonomic design



## Leaf Blower

- Air flow: 23 m<sup>3</sup>/min
- Wind velocity: 60 m/s
- Pressure: 2100 Pa
- Decibel: 50 dB (10 meters)
- Voltage: 48V
- Working motor speed: 0~12000 rpm



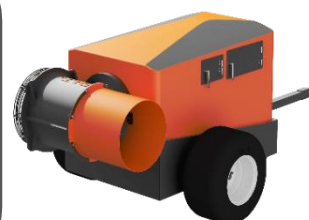
## Triple Riding Greens Mower

- Ideal Diesel Replacement
- Triple riding mower for greens and rough
- Cutting width up to 1803 mm
- Runtime: 4–6 hours | Power: 14 kW



## Turbine Blower

- Ideal for Large Turf Areas and Debris Removal
- High-power electric turbine blower
- Airflow up to 450 m<sup>3</sup>/min
- Runtime up to 14 hours



## Quintuple Riding Greens Mower

- Designed for Large Championship Courses
- High-capacity quintuple greens mower
- Cutting width: 2540 mm | Power: 20 kW
- Battery: 51.2V 460Ah



## Bunker Rake

- Electric Bunker Rake for Sand Traps
- Working width: 1900 mm
- 48V LiFePO<sub>4</sub> battery | 5 kW motor
- Consistent finish with zero



+61 (03) 7035 6313



info@igswater.com



www.igswater.com



IGS Asia Pacific,

Ground floor 470 St Kilda Rd

Melbourne, VIC 3004, AUS





More Information: <https://www.igswater.com/products/silver-ion-generator/>

# Silver Ion Generator

More than 650 strong antimicrobial, anti-virus substances, and eradication of fungus. It is suitable for places where strong sterilization is required without using chemicals such as pesticides, antibiotics, and disinfectants.

## Product Information:

(General/Household Use)

- Product Name: SH-100 / SH-70
- Rated Voltage: 220v / 50~60Hz
- Power Consumption: 70w
- Silver [AG] Purity: 99.9974%
- Output: 20 ton / Day
- Size: 210x280x105

This was the **world's first large-capacity product and automatic concentration (ppm) control system** that can generate 50- 100 tons a day. Moreover, it has a high quantity of silver ion output at a **low cost** by changing filters.

It can be used for agriculture, horticulture, restaurant, fisheries, school, and many more. This can help in disinfecting fruits and vegetables and many more.

Silver Ion Output	High- Capacity- Hydrophone
Automized	Automatic Concentration Control System *0.1-15ppm
Cost of Production	Low Cost of Generating Silver Ion Generator
Formation of Scale	Non-occurrence of scale *No need to clean until plate is exhausted*
Source of Water	Source of water (River water, Tap Water, Ground Water, Rainwater, etc.)
Safety and Utility	Safety and Purity- 99.9974% (Pure)



*\*Installing a Silver Ion Generator*



+61 (03) 7035 6313



info@igswater.com



www.igswater.com



IGS Asia Pacific,

Ground floor 470 St Kilda Rd

Melbourne, VIC 3004, AUS





More Information: <https://www.igswater.com/products/wxline/>

# Lightning Protection System (WxLine)

Critical safety, warning, and protection equipment must function reliably when needed most. Wxline designs systems minimize the potential for human error and function in severe weather and a lightning environment — immune to power outages, loss of internet, loss of cell phone service, and loss of personal computers.



## Lightning Detection System

Designed for critical applications, Strike Guard monitors cloud and cloud-to-ground lightning and provides contact-closure signaling at user-set lightning activity thresholds.

## Strike View Software

Strike View helps users analyse storm progression, categorize lightning information, and estimate the time to resume operations.

## Sequencer

WAVE Sequencer receives RF Transmitter messages and provides three outputs to control relays/contactors appropriate for managing the loads represented by pumps, irrigation systems, and other critical equipment.

## CAPB (Critical Asset Protection Bulkhead)

## Toro CAPB protection system

## Rain Bird CAPB (active lighting protection)

## WxEIB

Protect your equipment and streamline installations by having equipment factory-installed in a Wxline Equipment Indoor Bulkhead (WxEIB).



+61 (03) 7035 6313



[info@igswater.com](mailto:info@igswater.com)



[www.igswater.com](http://www.igswater.com)



IGS Asia Pacific,

Ground floor 470 St Kilda Rd

Melbourne, VIC 3004, AUS



# Water Quality Measuring Tools

It is designed to have that capability to remotely manage and monitor different sensors and collect and analyse the data to meet daily water quality standards.



*\*DWA 300A\**

## Features of DW series:

- Real Time Trend Analysis Function
- Digital Communication Function (RS-232C/RS-485)
- Microprocessor-Based Digital Program Controller
- Isolated DC (4-20/0-20/0-24mA) Output Transmission
- Automatic Cleaning Control Function
- Low-Cost For User Satisfaction
- Large graphic LCD display



*\*DWA 200B \**



*\*DWA 300B\**

	DWA-3000A Series	DWA-3000B Series	DWA-2000A Series
Power	AC 110V / 220V, 50/60Hz		
Channel	Single Channel		
Accuracy	pH : $\pm 0.01\text{pH}$ (of Full Scale) / ORP : $\pm 1\text{mV}$ (Of Full Scale)		
Reproducibility	pH : $\pm 0.01\text{pH}$ (of Full Scale) / ORP : $\pm 1\text{mV}$ (Of Full Scale)		
Resolution	pH : 0.01pH / ORP : 0.1 mV		
Response Time	pH : 30 Sec (90% Saturation) / ORP : 60 Sec (90% Saturation)		
Analog Output	4-20mA DC (Std.) / 0-20mA, 0-24mA (Opt.) / Dual Communication Output		4-20mA DC / Single Communication Output
Digital Output	RS-232C (Std.) , RS-485 (Opt.)		—
Relay Output	(HH,H,LLL) & Cleaning	High, Low, Selection & Cleaning	High, Low & Cleaning
Temp. Range	0-70°C		
Relative Humidity	Max. 90% (Non-Condensing)		
Display	5 Inch Graphic LCD(160X128), Trend Graph, Measuring Value, Measuring Status, Unit		7-Segment Output : Measured Value, Temperature
IP Rating	IP65 (NEMA 4X)	IP66	IP54
Size	240(W) X 185(H) X 115(D)	155(W) X 155(H) X 138(D)	98(W) X 96(H) X 125(D)
Installation	Wall Mounting	DIN 144 Panel Mounting	DIN 96 Panel Mounting



*\*Cord Sensor\**



*\*DO Sensor \**



*\*Ph, ORP Sensor\**



*\*SS, MLSS Sensor \**



+61 (03) 7035 6313



info@igswater.com



www.igswater.com



IGS Asia Pacific,

Ground floor 470 St Kilda Rd

Melbourne, VIC 3004, AUS



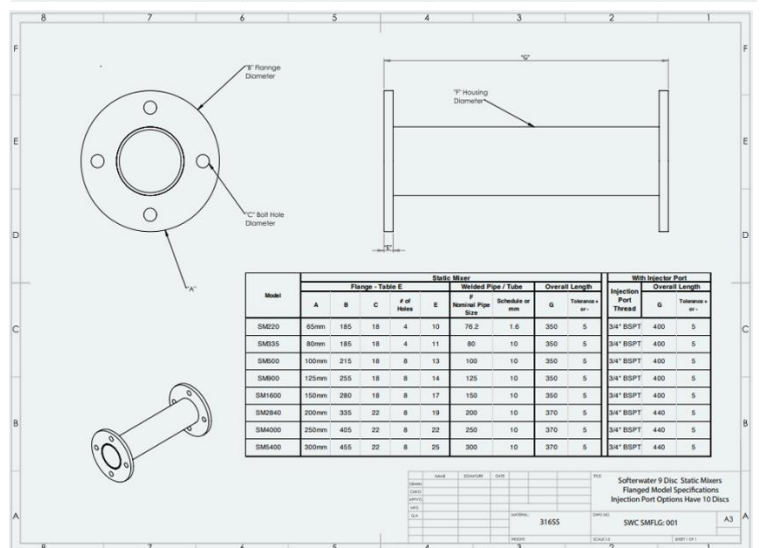
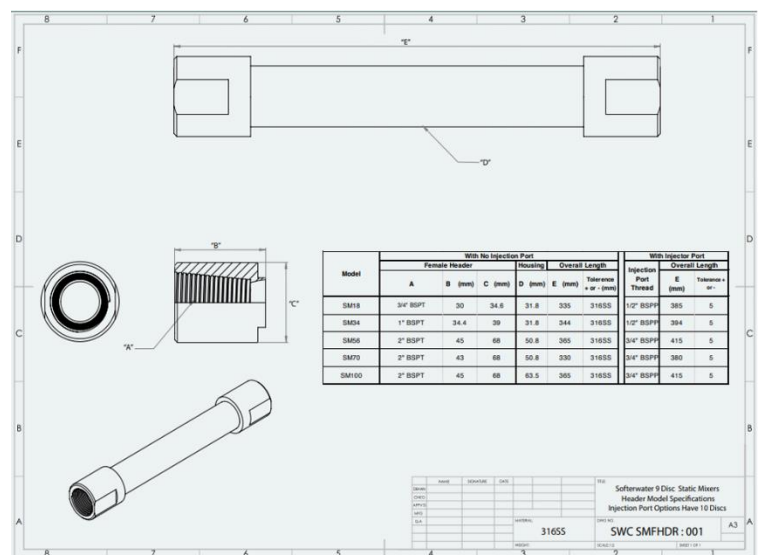
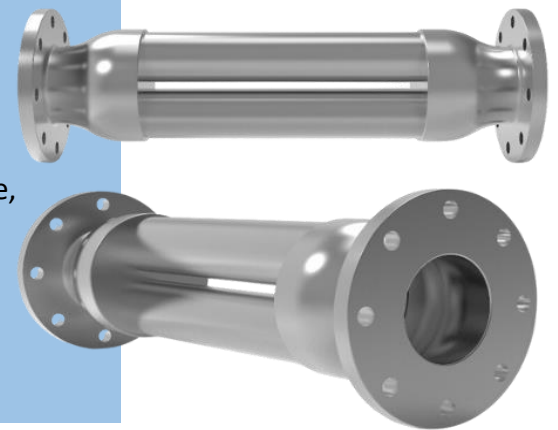
# Static Mixer

**Static Mixer changes the way water molecules relate to each other.**

Despite the absence of chemicals, the water's zeta potential is very negative, lowering water surface tension and making bacteria survival difficult.

The system altered hydrogen bonding between water molecules.

Every water-contact surface generates a high zeta potential and self-cleans and sterilises.



## Barrier Against Pathogens

After the filter mechanically smashes cryptosporidium oocysts, bacteria floc and even single bacteria. The water is mechanically disinfected and the performance of chlorine is amplified.

## Self-Sterilizing Water

Every surface in contact with the water develops a high zeta potential and becomes self-cleaning & sterilizing.



+61 (03) 7035 6313



info@igswater.com



www.igswater.com



IGS Asia Pacific,

Ground floor 470 St Kilda Rd

Melbourne, VIC 3004, AUS



IGS WATER  
A LIFE OF GIVING

# SERVICES:

## FAST, EFFECTIVE, PERSONALISED REMOTE TECHNICAL SUPPORT

IGS offers water management backup solutions and provide remote support to clients around the globe in the most effective way.

Our service can be tailored towards customers' unique situation and needs.

### Service Process STEP BY STEP



- 💧 Direct assistance to end users via messenger service
- 💧 Remote backup management
- 💧 Service issue logging system
- 💧 No Fix No Fee policy

- 💧 Complimentary remote training on water management system
- 💧 Sensor integration option
- 💧 10% discount on water treatment products
- 💧 After-hours support
- 💧 Regular system health checks



+61 (03) 7035 6313



info@igswater.com



www.igswater.com



IGS Asia Pacific,

Ground floor 470 St Kilda Rd

Melbourne, VIC 3004, AUS







# Our Locations

## Australia HQ

Ground floor,  
470 St Kilda Rd,  
Melbourne,  
VIC, 3004, AUS  
+61 3 7035 5313  
[info@igswater.com](mailto:info@igswater.com)

## Thailand Branch

101/01 Bang Kruai – Sai Noi Rd,  
Bang Rak Phatthana,,  
Bangbuathong,  
Nonthaburi 11110 Thailand  
+66 831788998  
[info@igswater.com](mailto:info@igswater.com)

**Shop:** <https://igswater.com/store/>



+61 (03) 7035 6313



[info@igswater.com](mailto:info@igswater.com)



[www.igswater.com](http://www.igswater.com)



IGS Asia Pacific,

Ground floor 470 St Kilda Rd

Melbourne, VIC 3004, AUS

