



**IGS ASIA PACIFIC**  
WATER SOLUTIONS



### **Wxline and IGS Asia Pacific**

In business since 2001, Wxline is the leader in the design and manufacture of state-of-the-art systems which address the most demanding lightning safety and equipment protection needs. Critical safety, warning, and protection equipment must function reliably when needed most, so Wxline designs systems that minimize the potential for human error and function in severe weather and a lightning environment --- immune to power outages, loss of internet, loss of cell phone service, and loss of personal computers. **IGS Asia Pacific Pty Ltd** is an authorised distributor of Wxline in Asia Pacific Region. IGS provides Wxline products to save customers from the costly repairs and loss of productivity associated with surge damage.

### **DESIGN                      PHILOSOPHIES                      AND                      MANUFACTURING                      PRINCIPLES**

- Automate all system functions
- Harden all electrical and mechanical materials for maximum durability and reliability.
- Put control in the hands of the user
- Build upon prior designs for uniformity
- Integrate all systems for inter-connectivity
- Simplify controls to minimize training needs

 +61 (03) 7035 6313  
 [info@igswater.com](mailto:info@igswater.com)  
 [www.igswater.com](http://www.igswater.com)

 IGS Asia Pacific,  
Ground floor  
470 St Kilda Rd  
Melbourne, VIC 3000, AUS





**Contents** (Screenshot numbers):

**Product Line**

- 1 | Strike Guard Lightning Detection System
- 2 | Strike View Software
- 3 | WAVE Siren Warning System
- 4 | Wxline Equipment Indoor Bulkheads (WxEIB)
- 5 | Active Lightning Protection (CAPB)
- 6 | Wxline Specialty Products (Wx-IT and ACI)
- 7 | Strike Guard with CS110 Electric field Mill
- 8 | Wxline Service

**System Design Examples**

- 9 | System Design: Golf Course
- 10 | System Design: Splash Pad
- 11 | System Design: Mine
- 12 | System Design: Military/Aviation
- 13 | System Design: Parks & Rec
- 14 | System Design: Industrial/Oil Rig

**About Wxline**

- 15 | Additional Parts and Ordering Information
- 16 | Wxline Factory Operations



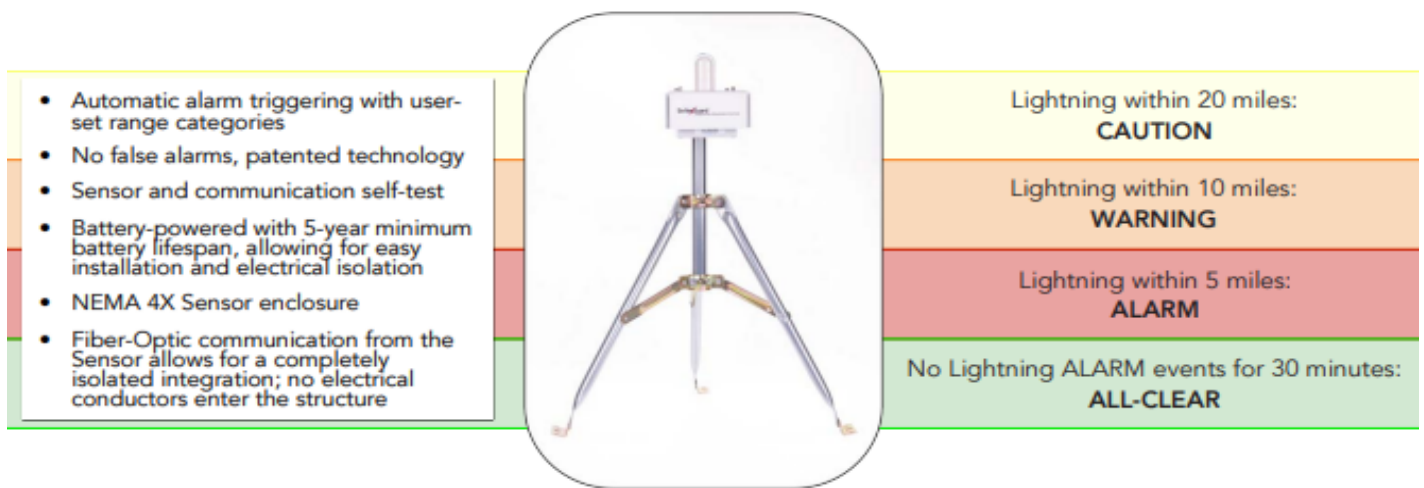


# IGS ASIA PACIFIC

WATER SOLUTIONS

## Lightning Detection Systems

Designed for critical applications, Strike Guard monitors cloud and cloud-to-ground lightning and provides contact-closure signalling at user-set lightning activity thresholds. Patented optical signal processing and proprietary optical-coincidence technology prevent false alarms. Strike Guard enables automated activation of warning systems for human safety, and initiation of data backup and generator start-up, while also shutting down and/or isolating electrical systems for the duration of the electrical storm.



The Strike Guard Lightning Data Receiver (LDR) is easy to install in an office environment, and easy to set-up and use.





## Strike Guard Lightning Warning System Part # SG001

Strike Guard Sensor, mounting hardware, and tripod (not shown); Lightning Data Receiver with alarms, relays, battery back-up and PC-ready output, 30-meter simplex fiber-optic cable, and USB memory stick with User's Guides (not shown).



Strike Guard Accessories	Part #	Description
Strike Guard with CS110 Electric field Mill	SG-CS110	The CS110 Electric field Mill measures electric field fluctuations associated with local thunderstorm development and alerts users to the increased likelihood of lightning strikes. CS110 is combined with Strike Guard to create a complete thunderstorm-threat measurement and analysis system.
Strike Guard Receiver Equipment Indoor Bulkhead	WxEIB-SG	Strike Guard Lightning Data Receiver is mounted in a 16 x 14 x 8-inch enclosure with clear door. See Section 4 for details.
Strike Guard Receiver Equipment Indoor Bulkhead with PC	Wx-PC-SG	Mini WxEIB with Wxline PC mounted on door for Strike View Software oversight. Pre-assembled with the latest Microsoft Windows Operating System and Strike View Software installed and registered for plug-and-play functionality. See Section 4 for details.

### Strike View Software

Download Strike View Server Software and connect the computer and Strike Guard Lightning Data Receiver for lightning data displays, email and text message notifications, audible and visual lightning alarms, and lightning data logging. Strike View helps users analyse storm progression, categorize lightning information, and estimate the time to resume operations.







# IGS ASIA PACIFIC

WATER SOLUTIONS



Strike View Software

Email and Text Message



**Caution**

11  
Minutes to  
Next Mode Change  
5:40:44 PM

**Warning**

29  
Minutes to  
Next Mode Change  
5:40:44 PM

**Alarm**

29  
Minutes to  
Next Mode Change  
5:40:44 PM

Lightning within 20 miles:  
**CAUTION**

Lightning within 10 miles:  
**WARNING**

Lightning within 5 miles:  
**ALARM**



No Lightning ALARM events for 30 minutes:  
**ALL-CLEAR**

Thunderstorm progression reports

Lightning event counts by range and time

System Mode

Countdown to ALL-CLEAR

Sensor Status indicators

System, Network, and Notification settings

Range	Description	Flashes Within	Last Flash Occurred	Time in Mode Today	Mode Change Timer
Caution	20 mi Close, Near and Distant	25	06s	10h 04m	30m 08s
Warning	10 mi Close and Near	5	01m	08h 32m	29m 08s
Alarm	5 mi Close	5	01m	06h 22m	28m 08s
All Ranges	Close, Near and Distant	25	06s	—	—

Lightning Flashes vs Time

System Mode: Alarm (29 Minutes to Warning Mode)

Sensor Status: Communication ACTIVE, Sensor Test PASS, Sensor Battery PASS

System Settings: Alarm Mode is active when 1 lightning flash is detected in the past 30 minutes in Alarm Range.

Network Settings: Networking enabled. There are 0 clients monitoring this location.

Notifications: Email Notifications Turned Off

+61 (03) 7035 6313

info@igswater.com

www.igswater.com

IGS Asia Pacific,  
Ground floor  
470 St Kilda Rd  
Melbourne, VIC 3000, AUS





Strike View Software Licenses	Part #	Description
Strike View Server Software	SG002	Strike View Server Software.
Strike View Client Software	SG002-NET	Connect an additional computer to Strike View Server over LAN.
Additional Strike View Clients	SG002- NETREG	Each additional computer operating Strike View Software across a LAN.
Strike View Client Site License	SG002-SITE	Up to ten Strike View Clients operating across a LAN. Requires purchase of SG002 and SG002-NET
Multiple Sensor Network	MSN	Links multiple Strike Guard Servers across a LAN. Requires purchase of SG002- SITE for each Strike Guard in network
Strike Guard with CS110 Software	SG002-CS110	All Strike View Software Packages are also offered for Strike Guard with CS110

### Warning Systems

Automatically alert personnel to Strike Guard CAUTIONS, WARNINGS, or ALARMS with WAVE Siren Stations. Voice-coil, folded exponential horns provide loud audible alerts while high-intensity xenon strobes provide persistent visual alerts.





# IGS ASIA PACIFIC

WATER SOLUTIONS



## WAVE Siren™

WIRELESS AUDIBLE VISUAL ENUNCIATOR

- Wireless activation from up to 2 miles away
- Programmable hours of operation
- Multi-stage strobe and audible notification
- Strobe-less and Strobe-only options available
- Many strobe colors available
- AC-powered or Solar-powered options available
- Adjustable horn volume

Lightning within 5 miles: **ALARM**

No lightning **ALARM** events for 30 minutes: **ALL-CLEAR**

## WAVE Transmitter

Part Number WAVE-TR01

The WAVE Transmitter activates WAVE Siren Stations and WAVE Sequencers by sending coded radio frequency messages to an unlimited number of units within a 2-mile radius. The Transmitter is an essential component to the WAVE System and is necessary to activate and control remote equipment.





## IGS ASIA PACIFIC

WATER SOLUTIONS

WAVE Siren Stations	Part	Description
Siren Station with Horn	WAVE-SS01	Each Station can be equipped with up to four horns (Part# WAVE-SS02 for two horns, etc).
Siren Stations with Horn and Strobe	WAVE-SS01-ST	A Siren Station can be equipped with up to four horns and one strobe.
Solar-Powered Stations w/ Horn	WAVE-SS01-SO	Solar Power eliminates the need for AC power at Siren Station locations.
Solar-Powered Stations w/ Horn + Strobe	WAVE-SS01-SO-ST	Wxline's 55-WATT Solar panels can power fully equipped Siren Stations.
Strobe-Only	WAVE-SS0S	Strobe-only.
Options	Description	
Solar Power	55-Watt Solar Panel eliminates the need for AC power. Includes mounting hardware and upgraded battery.	
Strobe	Add a high-intensity Strobe to any Siren Station. Strobe illuminates during lightning ALARM mode until alarm expires.	
Light Stack	Tri-colored light stack illuminates to show Strike Guard System Mode. CAUTION light indicates lightning within 20 miles; ALARM light indicates lightning within 10 or 5 miles; ALL-CLEAR light indicates no lightning events have occurred within past 30 minutes.	

### Wxline Equipment Indoor Bulkheads

Protect your equipment and streamline installations by having equipment factory-installed in a Wxline Equipment Indoor Bulkhead (WxEIB) or outdoor Solar Bulkhead.

Products that can be installed in bulkheads	Part #	Description
Strike Guard Lightning Data Receiver	SG-001	Lightning Data Receiver is factory-installed in WxEIB.
WAVE Transmitter	WAVE-TR01	WAVE Transmitter is factory-installed in WxEIB

+61 (03) 7035 6313  
info@igswater.com  
www.igswater.com

IGS Asia Pacific,  
Ground floor  
470 St Kilda Rd  
Melbourne, VIC 3000, AUS







## IGS ASIA PACIFIC

WATER SOLUTIONS

### Strike Guard Receiver Wxline Equipment Indoor Bulkhead Part #WxEIB-SG

Strike Guard Lightning Data Receiver is mounted in 17 x 14 x 10 inch poly-carbonate enclosure with complete lightning protection for incoming conductors and power supply. Pre-assembled for indoor mount.



### Wxline Equipment Indoor Bulkhead Part # WxEIB

Strike Guard Lightning Data Receiver & WAVE Transmitter assembled and mounted in a 20 x 16 x 10 inch poly-carbonate enclosure with complete lightning protection for incoming conductors and power supply. Pre-assembled for indoor mount.



### Wxline Equipment Solar Bulkhead Part # WxESB

Strike Guard Lightning Data Receiver & WAVE Transmitter assembled and mounted in a 20 x 16 x 10 inch poly-carbonate enclosure designed for solar power with battery back-up. Includes complete lightning protection for incoming conductors and power supply.



#### WxEIBs with PC

An industrial touchscreen PC is added to the WxEIB door for dedicated Strike View Software oversight. The WxEIB and Wxline PC are designed to function in a lightning environment --- even with loss of internet and commercial power. Bulkhead connectors include USB, HDMI, Ethernet, and power.

#### Plug-and-play functionality!

- Products are factory-installed & programmed for your system design
- Wxline PC comes with the latest Windows and Strike View Software registered and installed



+61 (03) 7035 6313



info@igswater.com



www.igswater.com



IGS Asia Pacific,  
Ground floor  
470 St Kilda Rd  
Melbourne, VIC 3000, AUS





# IGS ASIA PACIFIC

WATER SOLUTIONS

## Strike Guard Receiver Wxline Equipment Indoor Bulkhead with PC

Part # Wx-PC-SG

Strike Guard Receiver WxEIB with Wxline PC mounted on door for dedicated Strike View Software oversight. Includes complete lightning protection for incoming conductors and power supply. Pre-assembled with the latest Microsoft Windows software and Strike View Software installed on PC for turnkey use.



## Wxline Equipment Indoor Bulkhead with PC

Part # WxEIB-PC

Strike Guard Lightning Data Receiver and WAVE Transmitter are installed in WxEIB with Wxline PC mounted on door for Strike View Software oversight. Includes complete lightning protection for incoming conductors and power supply. Pre-assembled with the latest Microsoft Windows and Strike View Software installed on PC for turnkey use.



## Active Lightning Protection (CAPB)

The ultimate protection of electrical equipment from lightning is the disconnection of the equipment from conductive electrical systems. The WAVE Sequencer, typically installed in a Critical Asset Protection Bulkhead (CAPB), automatically initiates a programmable shutdown process to place critical equipment in a protected state upon lightning ALARM. The protected asset is automatically reconnected and powered back on upon the ALL-CLEAR.



+61 (03) 7035 6313  
info@igswater.com  
www.igswater.com

IGS Asia Pacific,  
Ground floor  
470 St Kilda Rd  
Melbourne, VIC 3000, AUS





# IGS ASIA PACIFIC

WATER SOLUTIONS

## WAVE Sequencer

Part # WAVE-PS01

The WAVE Sequencer receives RF Transmitter messages and provides three outputs to control relays/contactors appropriate for managing the loads represented by pumps, irrigation systems, and other critical equipment. Includes 3-foot antenna, radio receiver, battery backup, AC power supply and 25 ft. antenna cable with stainless steel antenna mount.



## WAVE Sequencer Direct Connect

Part # WAVE-PS01-DC

Provides direct connect interface to the Strike Guard Lightning Data Receiver main or auxiliary relay and provides three outputs to control relays/contactors appropriate for managing the loads represented by pumps, irrigation systems, and other critical equipment. Includes Strike Guard interface cable, battery backup, and AC power supply.

WAVE Sequencers can be installed on their own or within a Critical Asset Protection Bulkhead (CAPB), such as the CAPB-PUMP shown below. CAPBs are pre-assembled as lightning protection bulkheads with metal-enclosed switchgear.

### Pump Station Critical Asset Protection Bulkhead Part # CAPB-PUMP

WAVE Sequencer-based remote wireless or local Strike Guard direct (wired) connect for contact-closure relay signaling to initiate automated lightning ALARM shut-down/start-up of irrigation pump stations.

Add STROBE-CAPB for visual indication of SEQUENCE OFF condition.

See next page for more information.



+61 (03) 7035 6313



info@igswater.com



www.igswater.com



IGS Asia Pacific,  
Ground floor  
470 St Kilda Rd  
Melbourne, VIC 3000, AUS







# IGS ASIA PACIFIC

WATER SOLUTIONS

## Critical Asset Protection Bulkheads

Implement automated active lightning protection-by-isolation of industrial control systems and central pump stations by combining best-engineering-practice of Passive Lightning Protection with Wxline's fully automatic Active Lightning Protection bulkheads. CAPB capabilities include:

- Selective isolation - disconnects selected conductors from the critical asset.
- Selective grounding - grounds disconnected conductors.
- Selective shutdown - disconnects power conductors via independent circuits with programmable delays to provide the ultimate defences against over-voltages, electrical over-stress, and lightning surge currents.

### The Active Lightning Protection System Design and Build Process







# IGS ASIA PACIFIC

WATER SOLUTIONS

## Critical Asset Protection Bulkhead Central

### Part # CAPB-CENTRAL

Automatic lightning protection-by-isolation and/or grounding of field conductors connected to central irrigation controller computer and related hardware. Features a WAVE Sequencer (included) with fully-assembled-and-tested relay isolation bank, AC Power secondary surge suppressor, RF surge suppressor, and AC over-current protection appropriate for Satellite or Decoder systems. Designed and completely pre-assembled as a lightning protection bulkhead with metal-enclosed switchgear.



CAPB-CENTRAL: Open



CAPB-CENTRAL: Closed



CAPB-CENTRAL: Open



CAPB-CENTRAL: Closed

Add a STROBE for visual indication of ON/OFF condition



Part # STROBE-CAPB



+61 (03) 7035 6313



info@igswater.com



www.igswater.com



IGS Asia Pacific,  
Ground floor  
470 St Kilda Rd  
Melbourne, VIC 3000, AUS





# IGS ASIA PACIFIC

WATER SOLUTIONS

## Isolation Transformer

The Wxline Isolation Transformer (Wx-IT) is a complete electrical subsystem that creates a separate local electrical service at a location remote from the building service entrance. The Wx-IT provides significant hardening of a central computer and related accessories from lightning damage.

### Wxline Isolation Transformer

Part # Wx-IT

Fully metal-enclosed Isolation Transformer provides a separately derived system for irrigation components and related accessories.

Includes provision of AC power-in options, multiple output circuits with overcurrent protection, input AC power surge suppression, and ground lug for bonding to the ground electrode that is used for irrigation equipment protection.



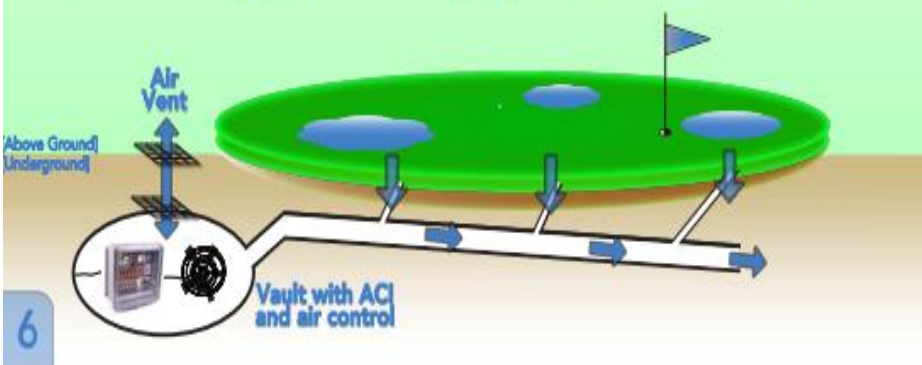
Wx-IT: Interior Electronics



Wx-IT: Closed

## Air Connect Interface

Wxline integrates field sensors (input and output) and the Air Connect Interface to enable Grounds teams to control precision air functions using the irrigation system infrastructure. The ACI enables irrigation software to control remote equipment such as pumps, fans, water flow, and heat.



### Air Connect Interface

Part # Wx-ACI

Interface between Irrigation system controls and the Air Control System beneath greens areas of a golf course





# IGS ASIA PACIFIC

WATER SOLUTIONS

## Strike Guard with CS110 Electric field Mill

The CS110 Electric field Mill measures electric field fluctuations associated with local thunderstorm development and alerts users to the increased likelihood of lightning strikes. CS110 is combined with Strike Guard to create a complete lightning-threat measurement and analysis system.

Data from the two sensors can trigger WAVE Siren warning equipment and help personnel make evacuation and shutdown decisions.



### Strike Guard with CS110 Electric field Mill

Part # SG-CS110

Strike Guard Sensor, mounting hardware, and tripod, Lightning Data Receiver with alarms, relays, battery back-up and PC-ready output, 30- meter simplex fiber-optic cable, and USB memory stick with User's Guides.

CS110 Electric field Mill measures electric field fluctuations associated with local thunderstorm development and alerts users to the increased likelihood of lightning strikes.

The two sensors combine to form a complete thunderstorm measurement and analysis system



Lightning within 5 miles, or electromagnetic field levels rise above user-set threshold:

**ALARM**

No lightning ALARM events for 30 minutes and electromagnetic field drops below user-set threshold for 30 minutes:

**ALL-CLEAR**







## Wxline Service

Wxline warrants that the products it distributes and sells will be free from defects in materials and workmanship for a period of one year from the date of receipt by the end user. Extended Warranties and Advance Exchange Agreements are available for Wxline products.

### Wxline Service Terms & Conditions:

- The equipment being returned must be serviceable to qualify for Advance Exchange.
- Modified or abused equipment is ineligible for Advance Exchange or Factory Service.
- Additional charges may apply based on condition of returned equipment.

### Extended Warranty

An Extended Warranty Advance Exchange lengthens Wxline's standard 1-year Factory Warranty to 3 years.

When warranty-covered equipment needs to be repaired, a customer may initiate an Advance Exchange.

To initiate an Advance Exchange, contact Wxline. Wxline will ship the replacement along with a return label. The old equipment is unplugged and the new equipment is installed immediately to minimize downtime. The old equipment is shipped back to Wxline.

### Advance Exchange

An Advance Exchange may be purchased at any time so long as the Wxline Service Terms and Conditions are met.

An Advance Exchange enables the owner to exchange old equipment for equipment of the latest factory standard.

When the customer decides it is time to swap old equipment out, Wxline will ship the new equipment along with a box with return label. Equipment is swapped on-site to minimize downtime. Old equipment is shipped back to Wxline.

### Factory Service

Basic Factory Service includes minor repairs. Additional charges may apply based on condition of equipment.

All Strike Guard factory service work includes upgrades to current software and hardware standards.

To minimize downtime, please notify Wxline prior to sending equipment in need of service to allow the Wxline Service Department to schedule the repair. Provide detailed information regarding the nature of system problems when contacting Wxline.

System	Wxline Products	Extended Warranty Advance Exchange Part #	Advance Exchange Part #	Factory Service Part #
Strike Guard	Strike Guard Sensor, Receiver	SG003	SG-AE	SG-SVC
WAVE Transmitter	WAVE Transmitter	WAVE-TR-EWAE	WAVE-TR-AE	WAVE-TR-SVC
WAVE Siren	WAVE Siren Station	WAVE-SS-EWAE	WAVE-SS-AE	WAVE-SS-SVC
WAVE Sequencer	WAVE Sequencer	WAVE-PS01-EWAE	WAVE-PS-AE	WAVE-PS-SVC
Wxline PC	Wxline PC & Monitor	Wx-PC-EWAE	Wx-PC-AE	Wx-PC-SVC







# IGS ASIA PACIFIC

WATER SOLUTIONS

## System Design: Golf Course Lightning Detection, Warning, and Protection

A complete lightning detection, warning, and protection system detects lightning threats, warns humans of the approaching danger, and protects critical assets from lightning-induced surge currents.

As shown:

### Strike Guard Lightning Detection System (section 1)

Detects lightning threats and categorizes threats by proximity.

### Wxline Equipment Indoor Bulkhead with PC (section 4)

Provides reports & alerts; activates WAVE equipment upon ALARM.

### 4 WAVE Siren Stations Dual with Strobes (section 3)

Horns sound and strobes flash to alert humans to the lightning threat.

### WAVE Siren Station Strobe Only (section 3)

Strobe flashes at the resort pool to alert humans to the lightning threat.

### 4 Critical Asset Protection Bulkheads (section 6)

Power down irrigation pumps to isolate vulnerable electrical components during local thunderstorms.



+61 (03) 7035 6313



info@igswater.com



www.igswater.com



IGS Asia Pacific,  
Ground floor  
470 St Kilda Rd  
Melbourne, VIC 3000, AUS







# IGS ASIA PACIFIC

WATER SOLUTIONS



## System Design: Splash Pad

Lightning Detection & Pump Shutdown



**Strike Guard Lightning Detection System (section 1)**  
Detects lightning threats and categorizes threats by proximity.

**Wxline Equipment Indoor Bulkhead with WAVE Transmitter (section 4)**  
Protects the Lightning Data Receiver and WAVE Transmitter; activates the Splash Pad CAPB and WAVE Siren Station.

**Splash Pad Critical Asset Protection Bulkhead (section 6)**  
Located in the pump house, the Splash Pad CAPB automatically powers down pumps when lightning is detected in ALARM range.

Splash Pad visitors should vacate the facility after water stops flowing and horns sound.

**WAVE Siren Station Dual with Strobe (section 3)**  
Horns sound and strobes flash to alert humans to the lightning threat.

**State-of-the-art Splash Pad Protection**

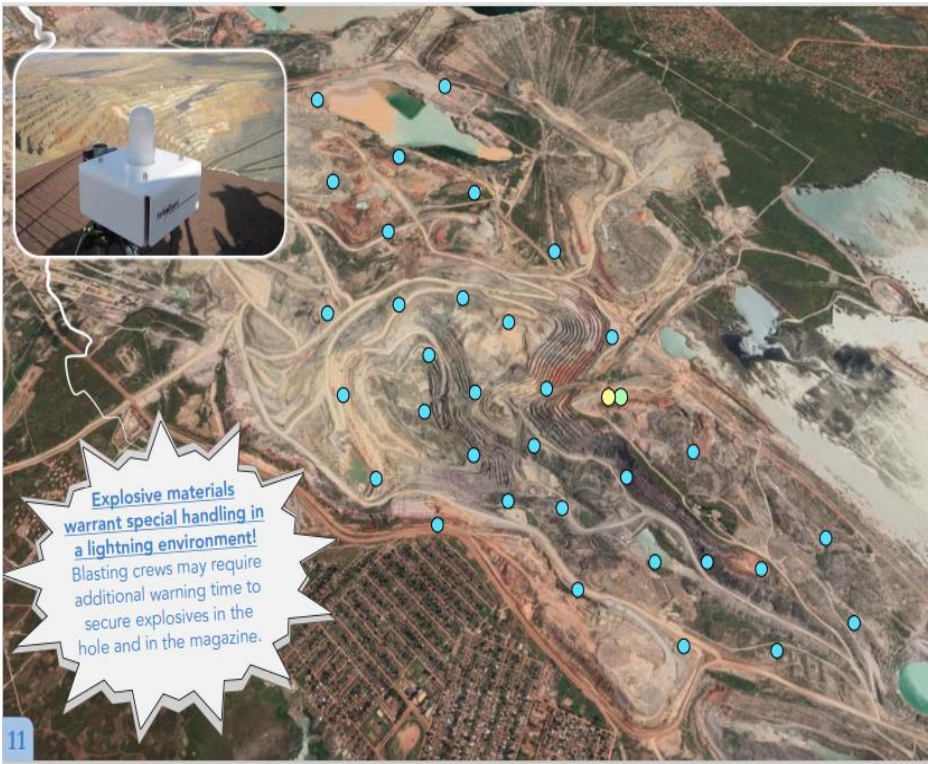
**Splash Pad Critical Asset Protection Bulkhead**  
Part # CAPB-SPAD

Strike Guard Lightning Data Receiver to WAVE Sequencer Direct-Connect with contact-closure relay signaling. Delivers automated shut-down and startup of splash pad pumps upon lightning ALARM. Power source disconnection/reconnection also provides splash pad equipment protection-by-isolation.

**Splash Pad Protection Package**

- Strike Guard System
- WxIB with WAVE Transmitter
- Splash Pad CAPB
- WAVE Siren Station with Strobe

10



## System Design: Mine

Lightning Detection and Early Warning



**Strike Guard Lightning Detection System (section 1)**  
Detects lightning threats and categorizes threats by proximity.

**Wxline Equipment Solar Bulkhead (section 4)**  
Provides environmental and electrical protection of the Lightning Data Receiver and WAVE Transmitter in the field; WAVE Transmitter automatically activates all WAVE Siren Stations upon lightning ALARM.

**WAVE Siren Stations with Solar and Strobe (section 3)**  
Located strategically in the working areas of an open pit mine, WAVE Siren Stations alert personnel to seek shelter from the lightning threat.

**For the ultimate lightning detection and prediction system, add a CS110 Electric field Mill (Section 7).**  
Strike Guard detects lightning threats and categorizes events by proximity; CS110 measures fluctuations in the electric field and alerts users to the increased likelihood of lightning events.

**Mine Lightning Warning Package**

- Strike Guard Lightning Warning System
- Wxline Equipment Solar Bulkhead
- Solar-Powered WAVE Siren Stations

**Explosive materials warrant special handling in a lightning environment!**  
Blasting crews may require additional warning time to secure explosives in the hole and in the magazine.

11

+61 (03) 7035 6313  
info@igswater.com  
www.igswater.com

IGS Asia Pacific,  
Ground floor  
470 St Kilda Rd  
Melbourne, VIC 3000, AUS







## System Design: Military / Aviation

Lightning Detection and Early Warning



**Strike Guard Lightning Detection System (section 1)**  
Detects lightning threats and categorizes threats by proximity.



**Wxline Equipment Indoor Bulkhead with PC (section 4)**  
Located in the hangar, the WxEIB-PC provides thunderstorm progression reporting & alerting, and automatically activates the WAVE Siren Station upon lightning ALARM.



**WAVE Siren Station with Strobe (section 3)**  
Horns sound and strobes flash to alert humans to the lightning threat.



**For the ultimate lightning detection and prediction system, add a CS110 Electric field Mill (Section 7).**

Strike Guard detects lightning threats and categorizes events by proximity; CS110 measures fluctuations in the electric field and alerts users to the increased likelihood of lightning events.







# IGS ASIA PACIFIC

WATER SOLUTIONS

## System Design: Parks & Rec

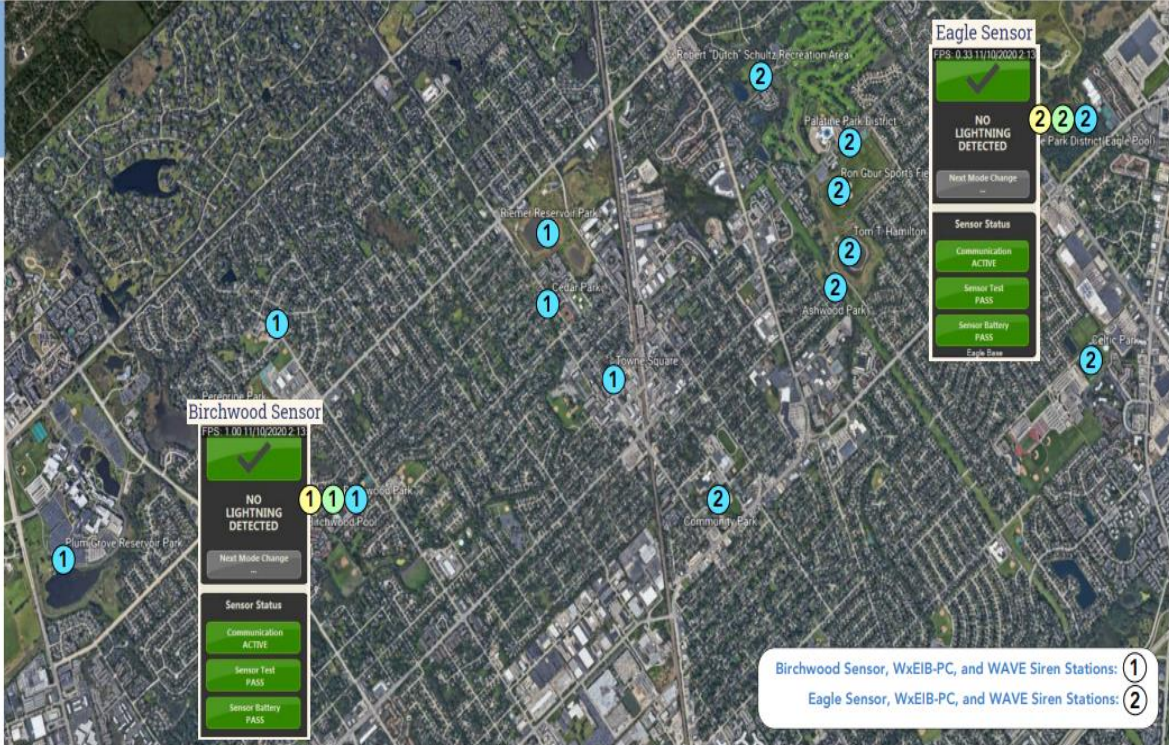
Lightning Detection and Early Warning

This Park District utilizes two Strike Guard Systems because their Parks are spread across a large area. Both Strike Guard Systems are accompanied by a WxEIB-PC with WAVE Transmitters which activate remote WAVE Siren Stations.

**2 Strike Guard Lightning Detection Systems (section 1)**  
One System controls the WAVE Siren Stations to the left of Town Square (Birchwood Sensor); one System controls the WAVE Siren Stations to the right of Town Square (Eagle Sensor).

**2 Wxline Equipment Indoor Bulkheads with PC (section 4)**  
Located with the Strike Guard Systems, the WxEIB-PC provides thunderstorm progression reporting & alerting, and automatically activates WAVE Siren Stations upon lightning ALARM.

**14 WAVE Siren Stations with Strobe (section 3)**  
Horns sound and strobes flash to alert humans to the lightning threat.



Birchwood Sensor, WxEIB-PC, and WAVE Siren Stations: ①  
Eagle Sensor, WxEIB-PC, and WAVE Siren Stations: ②

## System Design: Commercial/Industrial (Oil Rig)

Lightning Detection and Early Warning

Add a Tri-Color Strobe Light Stack!



**Strike Guard Lightning Detection System (section 1)**  
Detects lightning threats and categorizes threats by proximity.

**Wxline Equipment Indoor Bulkhead with PC and WAVE Transmitter (section 4)**  
Located in the control room, the WxEIB-PC provides thunderstorm progression reporting & alerting, and automatically activates WAVE Siren Stations upon lightning ALARM.

**3 WAVE Siren Station Dual with Strobes (section 3)**  
Horns sound and strobes flash to alert humans to the lightning threat.



### Industrial Lightning Warning Package

Strike Guard System  
WxEIB-PC with WAVE Transmitter  
Wave Siren Station Dual w/ Strobe



+61 (03) 7035 6313  
info@igswater.com  
www.igswater.com

IGS Asia Pacific,  
Ground floor  
470 St Kilda Rd  
Melbourne, VIC 3000, AUS







## Additional Parts and Ordering Information



### Wxline Surge Arrester in Enclosure

Secondary surge arrester for WAVE Siren Station, mounted in outdoor-rated NEMA 3R enclosure measuring 6 x 8 x 4 inches. Includes quick-connect for wire connections and ground lug.



### Extended-Range WAVE Siren Antenna Kit

Extended Range WAVE Siren Station 3-foot receiving antenna with stainless steel antenna mount and 12 ft. antenna cable.



### Strike Guard RS232 to fiber-Optic Converter

Converts data from the Strike Guard Lightning Data Receiver to a PC running Strike View Software.



### WAVE Siren Station Strobes

High-intensity Clear, Amber or Red Strobes illuminate during lightning CAUTION, WARNING, or ALARM modes. Limit one strobe per Siren Station.



### Tri-Color Strobe Light Stack

Tri-colored light stack illuminates to show Strike Guard System Mode: **AMBER** (Xenon) CAUTION light indicates lightning within 20 miles; **RED** (Xenon) ALARM light indicates lightning within 10 or 5 miles; **GREEN** (LED) ALL-CLEAR light indicates no lightning events have occurred within the past 30 minutes. This feature is added to a new WAVE Siren Station or Wxline Equipment Indoor Bulkhead.

### Shipping and Handling

Shipping and handling fees are quoted on a case-by-case basis. Orders shipping outside of the contiguous U.S. may require a special handling fee. For international orders, all duties, taxes, customs, or brokerage fees are the sole responsibility of the customer.

### Warranties

Wxline warrants that all products it distributes and sells will be free from defects in materials and workmanship for a period of one year from the date of receipt by the end user. Extended Warranties / Advance Exchanges are available for many Strike Guard and WAVE products (see section 8). If a product proves defective within the respective period, Wxline will provide timely repair or replacement of the product. Effectiveness and reliability of the Strike Guard and WAVE system is dependent on proper design, installation, monitoring, and maintenance for each unique facility.

