



IGS ASIA PACIFIC
WATER SOLUTIONS

CE

Water Quality Measuring ON-LINE System



+61 (03) 7035 6313



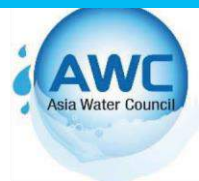
info@igswater.com



www.igswater.com



IGS Asia Pacific,
Ground floor
470 St Kilda Rd
Melbourne, VIC 3000, AUS





IGS ASIA PACIFIC
WATER SOLUTIONS



About Us

Dear Sir/Madam ,
Good day to you!

Our company was founded in 1982 and is specialized in electronic sensors and Industrial measuring instruments. We aim to maximise our company through wide experience and the management for customer satisfaction as a leader in the field. Our company is Producing High Quality Products Through Strict Inspection.

We Feel You Maybe Interested In Our Products and Would Like to Briefly Introduce Them as Follows:
Please See Attached Our Product Lines.

Thanks a lot.

 +61 (03) 7035 6313
 info@igswater.com
 www.igswater.com

 IGS Asia Pacific,
Ground floor
470 St Kilda Rd
Melbourne, VIC 3000, AUS





Table of Contents

Water Quality Measuring On-line System

pH/ORP Analyzer Dissolved	_04
Oxygen Analyzer Conductivity	_09
Analyzer Suspended Solids	_12
Analyzer	_15
Mixed Liquid Suspended Solids Analyzer Turbidity	_18
Analyzer	_21
Mounting Example	_23
Installation Example	_26

Aquariums & Pets Supply

Digital Marine Tester (DMT-10)	_27
--------------------------------	-----

Home & Industrial Measurement

Digital Salt Tester (DMT-20)	_28
Digital Thermometer (HDT-1)	_29
Digital Hygro-Thermometer (DH-10)	_30

Measuring & Testing Equipment

Portable Chloride Meter for Fresh Concrete (DY-2501A) Portable	_31
Chloride Meter for Hardened Concrete (DY-2501B) CHLORIDE	_32
METER (DY-2504)	_33
CHLORIDE METER (DY-2504 B)	_34
Concrete Air Meter (DYA-107)	_35
Digital Concrete Air-Meter (DY-300)	_36





IGS ASIA PACIFIC
WATER SOLUTIONS

On-Line Water Quality System pH / ORP Analyzer & Sensor

DWA 3000A/3000B/2000A pH/ORP Analyzer



DWA-3000A Series



DWA-3000B Series



DWA-2000A Series

Features

- . Real Time Trend Analysis Function
- . Microprocessor-Based Digital Program Controller
- . Isolated DC (4-20/0-20/0-24mA) Output Transmission
- . Automatic Cleaning Control Function
- . Low-Cost For User Satisfaction
- . CE Mark Accredited



Specifications

	DWA-3000A Series	DWA-3000B Series	DWA-2000A Series
Power	AC 110V / 220V , 50/60Hz		
Channel	Single Channel		
Accuracy	pH : $\pm 0.01\text{pH}$ (of Full Scale) / ORP : $\pm 1\text{mV}$ (Of Full Scale)		
Reproducibility	pH : $\pm 0.01\text{pH}$ (of Full Scale) / ORP : $\pm 1\text{mV}$ (Of Full Scale)		
Resolution	pH : 0.01pH / ORP : 0.1 mV		
Response Time	pH : 30 Sec (90% Saturation) / ORP : 60 Sec (90% Saturation)		
Analog Output	4~20mA DC (Std.) / 0~20mA, 0~24mA (Opt.) / Dual Communication Output		4~20mA DC / Single Communication Output
Digital Output	RS-232C (Std.) , RS-485 (Opt.)		—
Relay Output	(HH,H,L,LL) & Cleaning	High, Low, Selection & Cleaning	High, Low & Cleaning
Temp. Range	0~70°C		
Relative Humidity	Max. 90% (Non-Condensing)		
Display	5 Inch Graphic LCD(160X128), Trend Graph, Measuring Value, Measuring Status, Unit		7-Segment Output : Measured Value, Temperature
IP Rating	IP65 (NEMA 4X)	IP66	IP54
Size	240(W) X 185(H) X 115(D)	155(W) X 155(H) X 138(D)	96(W) X 96(H) X 125(D)
Installation	Wall Mounting	DIN 144 Panel Mounting	DIN 96 Panel Mounting

+61 (03) 7035 6313
info@igswater.com
www.igswater.com

IGS Asia Pacific,
Ground floor
470 St Kilda Rd
Melbourne, VIC 3000, AUS





pH / ORP Sensor - Specification



pH Sensor				
Model	PW34	LPS-2221N	LPS-2121	LPB-3121
Method	Combination Glass Electrode	Combination Glass Electrode	Combination Glass Electrode	Combination Glass Electrode
Interior Liquid	Non-Rifillable KCL 3.3M	Non-Rifillable KCL 3.3M	Non-Rifillable KCL 3.3M	Non-Rifillable KCL 3.3M
Range	0~14pH	0~14pH	2~12pH	0~14pH
Sensor Material	PPS	GLASS	PPS	GLASS
Cable Length	10M(32.8ft)	5M(16.4ft)	10M(32.8ft)	7M(22.9ft)
Temp. Sensor	RTD(pt1000ohm)	RTD(pt1000ohm)	RTD(pt1000ohm)	RTD(pt1000ohm)
Temp. Condition	0~110°C	0~60°C	0~80°C	0~130°C
Pressure Condition	Max. 6kgf/cm ²	Max. 6kgf/cm ²	Max. 6kgf/cm ²	Max. 6kgf/cm ²
Application	Waste Water, Sewage, General	Ultrapure Water	TMS, Purification Plant, Effluent Water	Desulfurization pH
Size	29Φ X 160 mm	12Φ X 148 mm	28Φ X 175 mm	12Φ X 250 mm
Thread	3/4 inch NPT	PG 13.5	3/4 inch NPT	PG 13.5
Holder Type	Submersion / Flow-Through	Submersion / Flow-Through	Submersion / Flow-Through	Submersion / Flow-Through
IP Rating	IP68	IP68	IP68	IP68



+61 (03) 7035 6313



info@igswater.com



www.igswater.com



IGS Asia Pacific,
Ground floor
470 St Kilda Rd
Melbourne, VIC 3000, AUS





IGS ASIA PACIFIC
WATER SOLUTIONS



ORP Sensor

	LRS-2801	LR-58P
Model	LRS-2801	LR-58P
Method	Combination Pt Electrode	Combination Pt Electrode
Interior Liquid	Non-Rifillable KCL 3.3M	Non-Rifillable KCL 3.3M
Range	-2000 ~ +2000 mV	-420 ~ +420 mV
Sensor Material	PPS	PPS
Cable Length	10M(32.8ft)	10M(32.8ft)
Temp. Sensor	None.	None.
Temp. Condition	0~110°C	0~110°C
Pressure Condition	Max. 6kgf/cm ²	Max. 6kgf/cm ²
Application	Wastewater, Sewage	Ultrapure Water
Size	28Φ X 175 mm	29Φ X 145 mm
Thread	3/4 Inch NPT	3/4 inch NPT
Holder Type	Submersion/Flow-Through	Submersion/Flow-Through
IP Rating	IP68	IP68

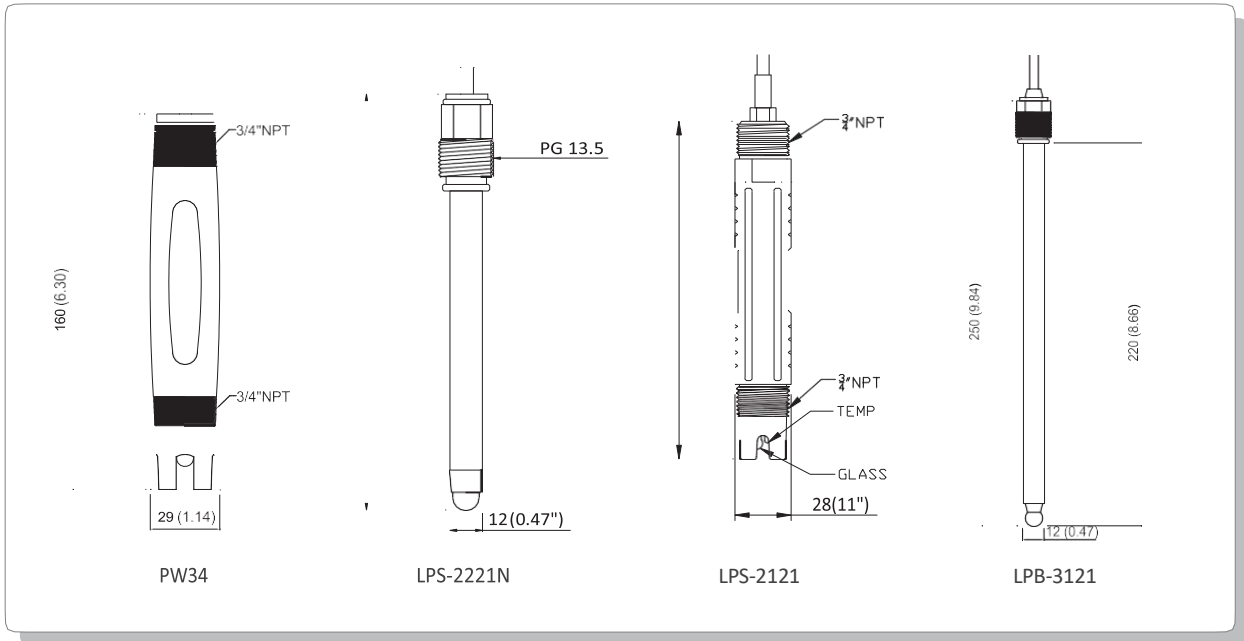
+61 (03) 7035 6313
info@igswater.com
www.igswater.com

IGS Asia Pacific,
Ground floor
470 St Kilda Rd
Melbourne, VIC 3000, AUS

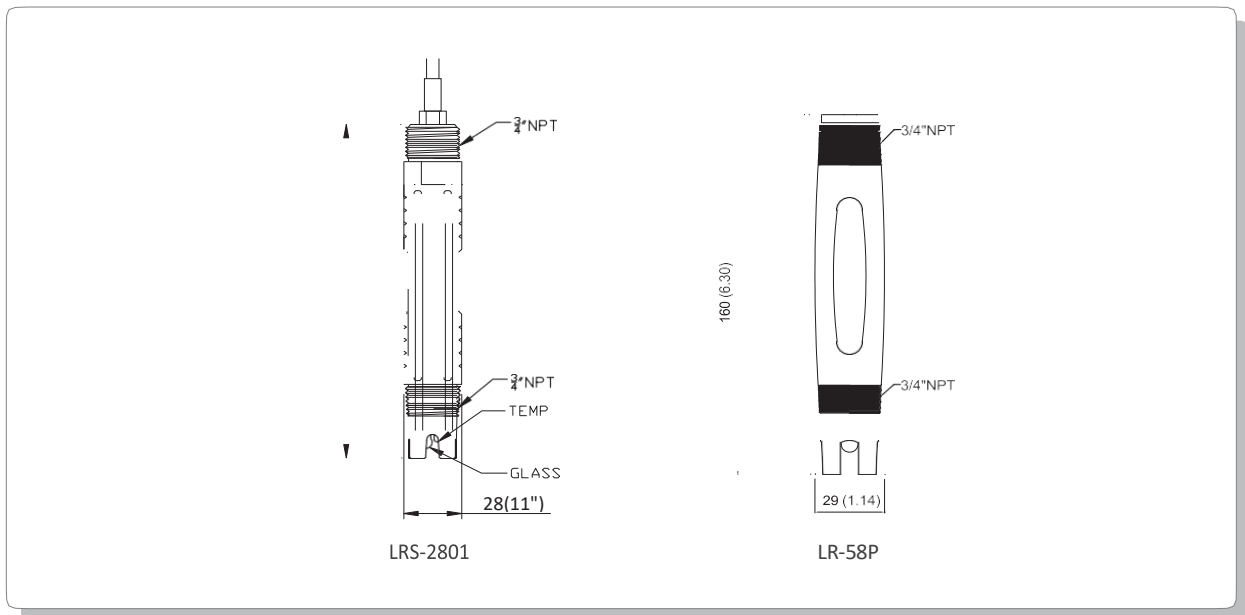




pH Dimensions



ORP Dimensions



+61 (03) 7035 6313



info@igswater.com



www.igswater.com



IGS Asia Pacific,
Ground floor
470 St Kilda Rd
Melbourne, VIC 3000, AUS

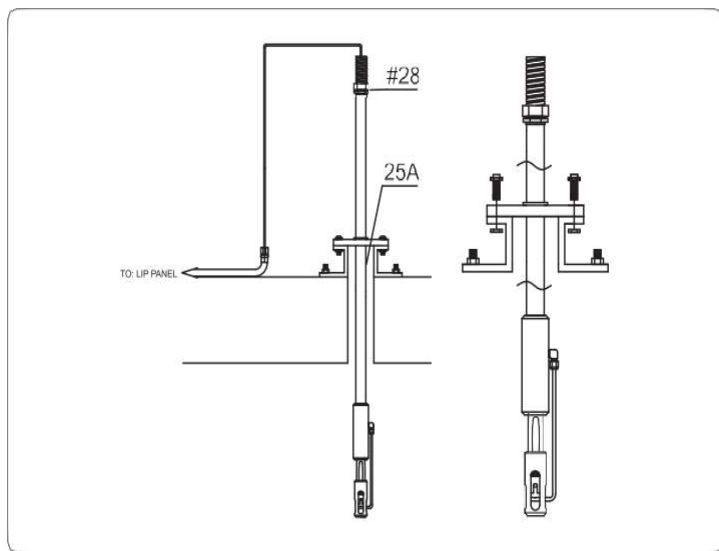
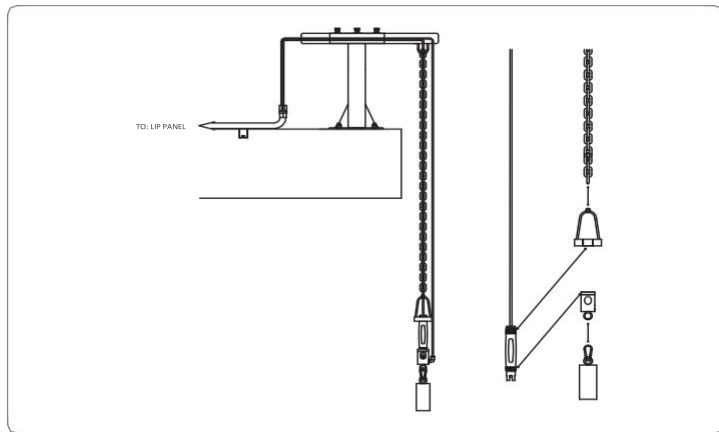
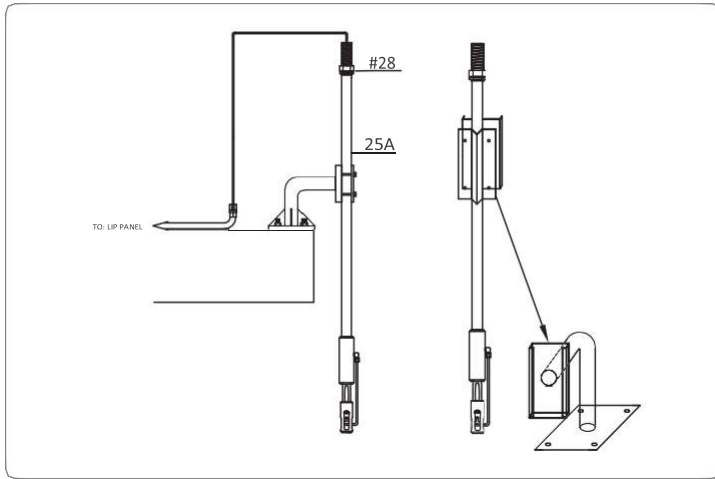




IGS ASIA PACIFIC

WATER SOLUTIONS

Submersion Type Installation



Pipe Type

- Apply to Wastewater Treatment Process
- Pipe Type Submersible Holder
- Fix a Pipe by Exclusive Use Bracket
- Cleaning System Optional
- Holder Length Can be Available User's Spec. Holder Length Need 3M More, Encourage Chain Type
- Pipe Length 1M,2M or More Increase Can be Possible.
- Pipe Material: PVC/PP(Std.), STS304(Optional). Bracket Material: STS304.

Chain Type

- Applied at Installation In Deep Water
- Pipe Type Submersible Holder
- Fix a Pipe by Exclusive Use Bracket.
- Cleaning System Optional
- This Holder Need When Installate In Deep Water
- Hang Weight at the Bottom of Sensor.
- Easy to Carry
- Chain Length : 5M.
- Chain Material : STS304
- Bracket Material : STS304.

Flange Type

- Flange Type Submersible Holder
- The Upper Part of Enclosed Tank, Flush type
- Underground Sewage Disposal Plant
- The Choice of Flange Type Can be Available
- Provide Flange Mounted Pipe
- Flange Can be Available Fixed/Height-Adjustable Type
- Cleaning System Optional
- Holder Length Can be Available User's Spec
- Pipe length 1M, 2M or More Increase Can be Possible.
- Pipe Material : PVC/PP(Std.),STS304(Option).
- Flange Material : PVC/PP(Std.),STS304(Option)
- Bracket Material : STS304

+61 (03) 7035 6313
info@igswater.com
www.igswater.com

IGS Asia Pacific,
Ground floor
470 St Kilda Rd
Melbourne, VIC 3000, AUS





IGS ASIA PACIFIC
WATER SOLUTIONS

On-Line Water Quality System Dissolved Oxygen Analyzer & Sensor

DWA – 3000A/3000B/2000A Conductivity Analyzer



Features

- . Real Time Trend Analysis Function
- . Microprocessor-Based Digital Program Controller
- . Isolated DC (4-20/0-20/0-24mA) Output Transmission
- . Automatic Cleaning Control Function
- . Low-Cost For User Satisfaction
- . CE Mark Accredited



Specifications

	DWA-3000A Series	DWA-3000B Series	DWA-2000A Series
Power	AC 110V / 220V , 50/60Hz		
Channel	Single Channel		
Accuracy	± 1% (of Full Scale)		
Reproducibility	± 1% (of Full Scale)		
Resolution	0.01mg/L		
Response Time	120 Sec (90% Saturation)		
Analog Output	4~20mADC (Std.)/0~20mA,0~24mA(Opt.)/Dual Communication Output		4~20mA DC / Single Communication Output
Digital Output	RS-232C (Std.) , RS-485 (Opt.)		—
Relay Output	(HH,H,L,LL) & Cleaning	High, Low, Selection & Cleaning	High, Low & Cleaning
Temp. Range	0~70°C		
Relative Humidity	Max. 90% (Non-Condensing)		
Display	5 Inch Graphic LCD(160X128), Trend Graph, Measuring Value, Measuring Status, Unit		7-Segment Output : Measured Value, Temperature
IP Rating	IP65 (NEMA 4X)		IP54
Size	240(W) X 185(H) X 115(D)	155(W) X 155(H) X 138(D)	96(W) X 96(H) X 125(D)
Installation	Wall Mounting	DIN 144 Panel Mounting	DIN 96 Panel Mounting



+61 (03) 7035 6313



info@igswater.com



www.igswater.com



IGS Asia Pacific,
Ground floor
470 St Kilda Rd
Melbourne, VIC 3000, AUS





IGS ASIA PACIFIC

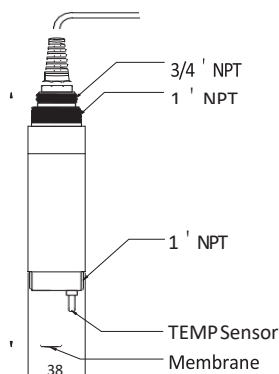
WATER SOLUTIONS

Conductivity Sensor - Specification

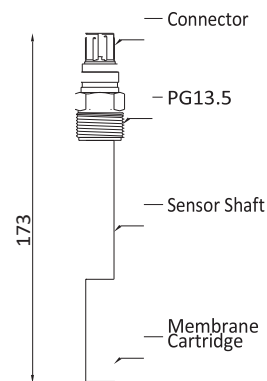


Model	DDO-G100	DLY-500
Method	Polarography	Polarography
Range	0~20 mg/L	2~20,000 ppb
Temp. Sensor	RTD(pt1000ohm)	RTD(pt1000ohm)
Temp. Range	0~80°C	0~80°C
Pressure	Max. 4kgf/cm ²	Max. 4kgf/cm ²
Application	Water Purification, Sewage, Wastewater	Demineralized Water
Size	38Φ X 195 mm	12Φ X 173 mm
Cable Length	10M(32.8ft)	10M(32.8ft)
Thread	3/4 Inch NPT	PG13.5
IP Rating	IP68	IP68

Dimensions



DDO-G100



DLY-500

 +61 (03) 7035 6313
 info@igswater.com
 www.igswater.com

 IGS Asia Pacific,
 Ground floor
 470 St Kilda Rd
 Melbourne, VIC 3000, AUS

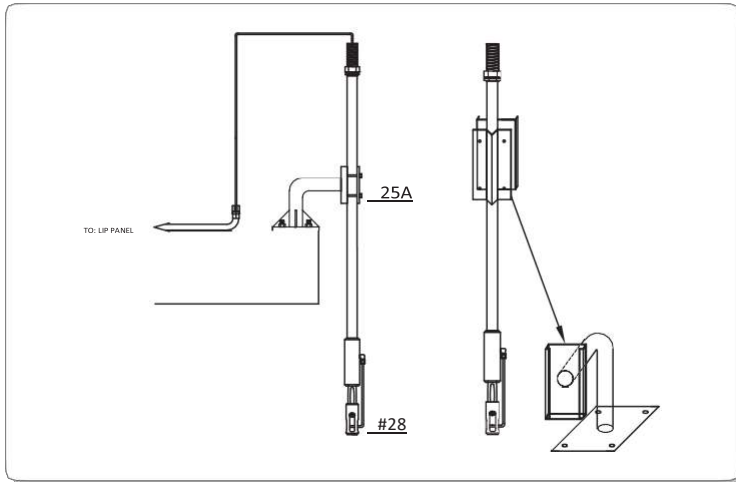




IGS ASIA PACIFIC

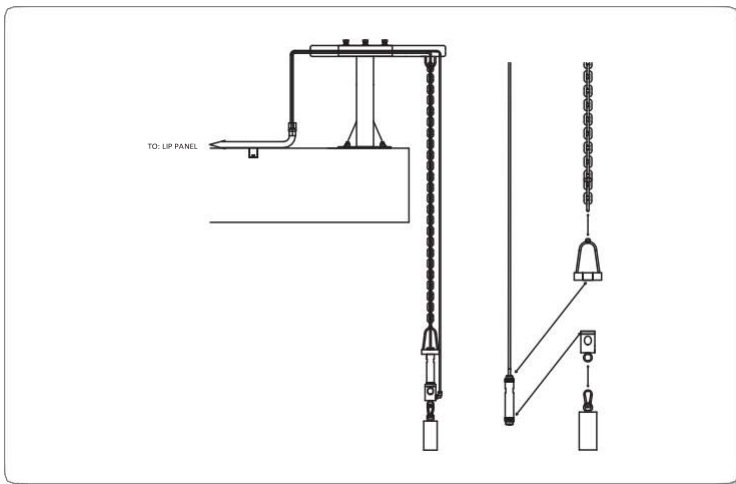
WATER SOLUTIONS

Submersion Type Installation



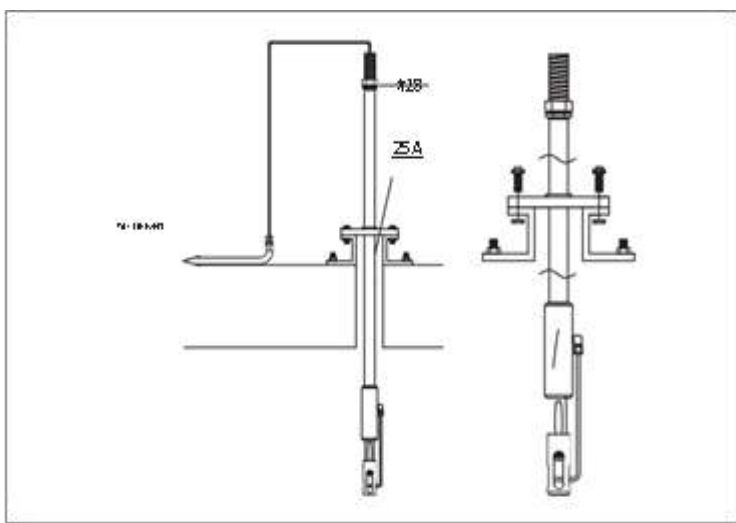
Pipe Type

- Apply to Wastewater Treatment Process Pipe
- Pipe Type Submersible Holder
- Fix a Pipe by Exclusive Use Bracket
- Cleaning System Optional
- Holder Length Can be Available User's Spec.
- Holder Length Need 3M More, Encourage Chain Type
- Pipe Length 1M,2M or More Increase Can be Possible.
- Pipe Material : PVC/PP(Std.), STS304(Optional).
- Bracket Material : STS304.



Pipe Type

- Applied at Installation In Deep Water
- Pipe Type Submersible Holder
- Fix a Pipe by Exclusive Use Bracket.
- Cleaning System Optional
- This Holder Need When Installate in Deep Water
- Hang Weight at the Bottom of Sensor.
- Easy to Carry
- Chain Length : 5M.
- Chain Material : STS304
- Bracket Material : STS304.



Pipe Type

- Flange Type Submersible Holder
- The Upper Part of Enclosed Tank, Flush Type
- Underground Sewage Disposal Plant
- The Choice of Flange Type Can be Available
- Provide Flange Mounted Pipe
- Flange Can be Available Fixed/Height-Adjustable Type
- Cleaning System Optional
- Holder Length Can be Available User's Spec
- Pipe Length 1M,2M or More Increase Can be Possible.
- Pipe Material : PVC/PP(Std.),STS304(Option).
- Flange Material : PVC/PP(Std.),STS304(Option)
- Bracket Material : STS304.





IGS ASIA PACIFIC
WATER SOLUTIONS

On-Line Water Quality System Conductivity Analyzer & Sensor

DWA – 3000A/3000B SS Analyzer



DWA-3000A Series



DWA-3000B Series



DWA-2000A Series

Features

- . Real Time Trend Analysis Function
- . Microprocessor-Based Digital Program Controller
- . Isolated DC (4-20/0-20/0-24mA) Output Transmission
- . Automatic Cleaning Control Function
- . Low-Cost For User Satisfaction
- . CE Mark Accredited



Specifications

	DWA-3000A Series	DWA-3000B Series	DWA-2000A Series
Power	AC 110V / 220V , 50/60Hz		
Channel	Single Channel		
Accuracy	± 1% (of Full Scale)		
Reproducibility	± 1% (of Full Scale)		
Resolution	0.001 uS/cm		
Response Time	10 Sec (90% Saturation)		
Analog Output	4~20mA DC (Std.) / 0~20mA, 0~24mA (Opt.) / Dual Communication Output		4~20mA DC / Single Communication Output
Digital Output	RS-232C (Std.) , RS-485 (Opt.)		—
Relay Output	(HH,H,LL) & Cleaning	High, Low, Selection & Cleaning	High, Low & Cleaning
Temp. Range	0~70°C		
Relative Humidity	Max. 90% (Non-Condensing)		
Display	5Inch Graphic LCD(160X128), Trend Graph, Measuring Value, Measuring Status, Unit		7-Segment Output : Measured Value, Temperature
IP Rating	IP65 (NEMA 4X)		IP54
Size	240(W) X 185(H) X 115(D)	155(W) X 155(H) X 138(D)	96(W) X 96(H) X 125(D)
Installation	Wall Mounting	DIN 144 Panel Mounting	DIN 96 Panel Mounting



+61 (03) 7035 6313



info@igswater.com



www.igswater.com

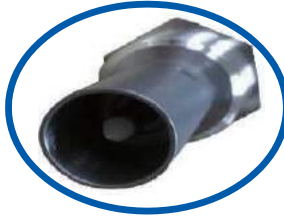


IGS Asia Pacific,
Ground floor
470 St Kilda Rd
Melbourne, VIC 3000, AUS



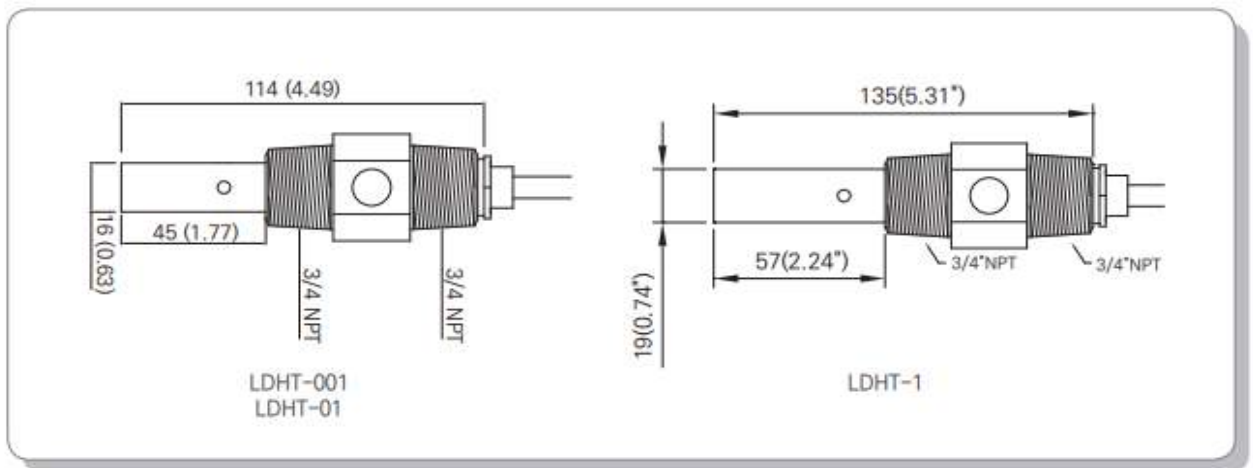


Conductivity Sensor - Specification



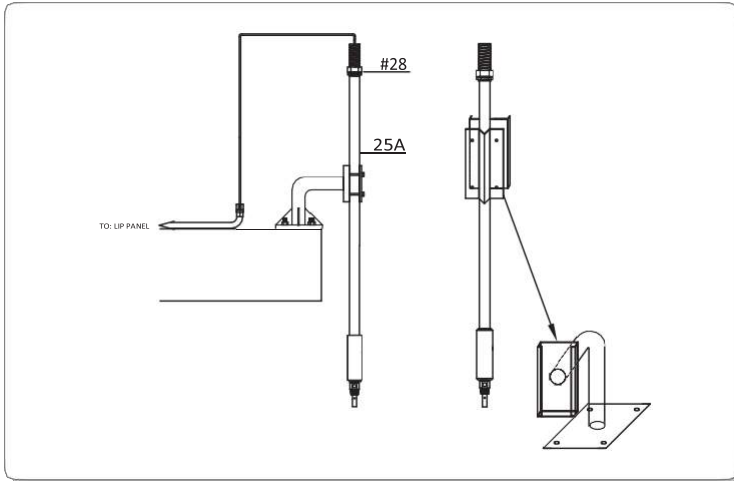
Model	LDHT-001	LDHT-01	LDHT-1
Method	Two-Electrode	Two-Electrode	Two-Electrode
Range	0~20 uS/cm	0~200 uS/cm	0~2,000 uS/cm
Sensor Material	Titanium	Titanium	Titanium
Cell Constant	0.01cm ⁻¹	0.1cm ⁻¹	1cm ⁻¹
Temp. Sensor	RTD(pt1000ohm)	RTD(pt1000ohm)	RTD(pt1000ohm)
Temp. Condition	0~110°C	0~110°C	0~110°C
Pressure Condition	Max. 10kgf/cm ²	Max. 10kgf/cm ²	Max. 10kgf/cm ²
Holder Type	Submersion/Flow-Through	Submersion/Flow-Through	Submersion/Flow-Through
Application	Power Plant, PLC/LCD Fabrication Process, Filter Bed Process	Power Plant, PLC/LCD Fabrication Process, Filter Bed Process	Water & Sewage Water Quality Management, Purification Plant Cooling Tower Process, Seawater Infiltration Management
Cable Length	10M(32.8ft)	10M(32.8ft)	10M(32.8ft)
Thread	3/4 inch NPT	3/4 inch NPT	3/4 inch NPT
IP Rating	IP68	IP68	IP68

Dimensions



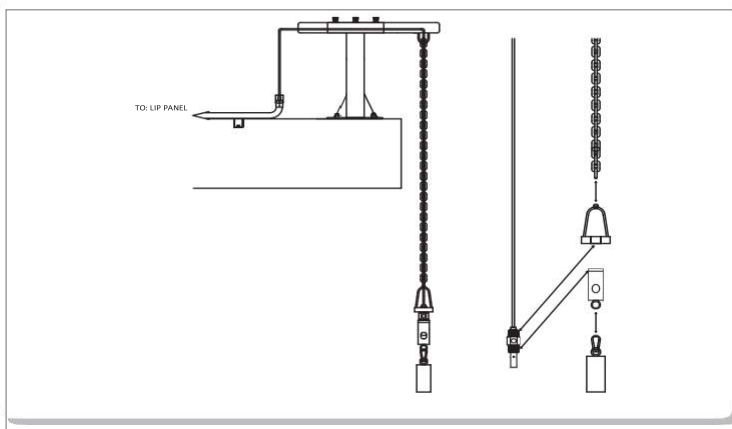


Submersion Type Installation



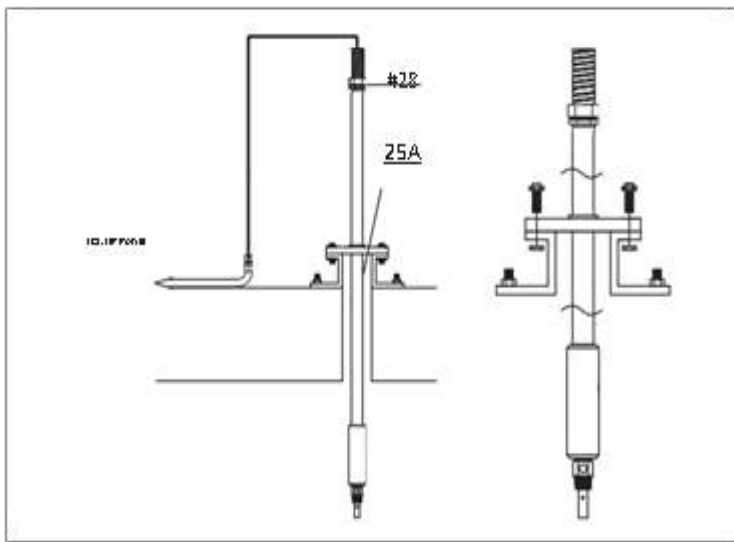
Pipe Type

- Apply to Wastewater Treatment Process Pipe Type Submersible Holder
- Fix a Pipe by Exclusive Use Bracket
- Cleaning System Optional
- Holder Length Can be Available User's Spec.
- Holder Length Need 3M More, Encourage Chain Type
- Pipe Length 1M,2M or Apply to Wastewater Treatment Process Pipe Type Submersible Holder Fix a Pipe by Exclusive Use Bracket Cleaning System Optional Holder Length Can be Available User's Spec. Holder



Pipe Type

- Applied at Installation In Deep Water
- Pipe Type Submersible Holder
- Fix a Pipe by Exclusive Use Bracket.
- Cleaning System Optional
- This Holder Need When Installate in Deep Water
- Hang Weight at the Bottom of Sensor.
- Easy to Carry
- Chain Length : 5M.
- Chain Material : STS304
- Bracket Material : STS304



Pipe Type

- Flange Type Submersible Holder
- The Upper Part of Enclosed Tank, Flush Type
- Underground Sewage Disposal Plant
- The Choice of Flange Type Can be Available
- Provide Flange Mounted Pipe
- Flange Can be Available Fixed/Height-Adjustable Type
- Cleaning System Optional
- Holder Length Can be Available User's Spec
- Pipe Length 1M,2M or More Increase Can be Possible.
- Pipe Material : PVC/PP(Std.),STS304(Option).
- Flange Material : PVC/PP(Std.),STS304(Option)
- Bracket Material : STS304





IGS ASIA PACIFIC
WATER SOLUTIONS

On-Line Water Quality System Suspended Solids Analyzer & Sensor

DWA - 3000A/3000B SS Analyzer



DWA-3000A Series



DWA-3000B Series

Features

- . Real Time Trend Analysis Function
- . Microprocessor-Based Digital Program Controller
- . Isolated DC (4-20/0-20/0-24mA) Output Transmission
- . Automatic Cleaning Control Function
- . Low-Cost For User Satisfaction
- . CE Mark Accredited



Specifications

	DWA-3000A Series	DWA-3000B Series
Power	AC 110V / 220V , 50/60Hz	
Channel	Single Channel	
Accuracy	± 0.5% (of FullScale)	
Reproducibility	± 0.5% (of FullScale)	
Resolution	0.01mg/L	
Response Time	120 Sec (90% Saturation)	
Analog Output	4~20mA DC (Std.) / 0~20mA, 0~24mA (Opt.) / Dual Communication Output	
Digital Output	RS-232C (Std.) , RS-485 (Opt.)	
Relay Output	(HH,H,L,LL) & Cleaning	High, Low, Selection & Cleaning
Temp. Range	-25°C~70°C	
Relative Humidity	Max. 90% (Non-Condensing)	
Display	5 Inch Graphic LCD(160X128), Trend graph, Measuring Value, Measuring Status, Unit	
IP Rating	IP65 (NEMA 4X)	IP66
Size	240(W) X 185(H) X 115(D)	155(W) X 155(H) X 138(D)
Installation	Wall Mounting	DIN 144 Panel Mounting



+61 (03) 7035 6313



info@igswater.com



www.igswater.com



IGS Asia Pacific,
Ground floor
470 St Kilda Rd
Melbourne, VIC 3000, AUS



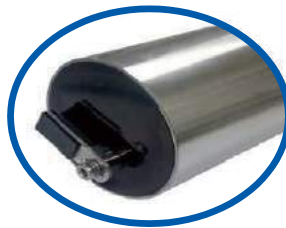


IGS ASIA PACIFIC

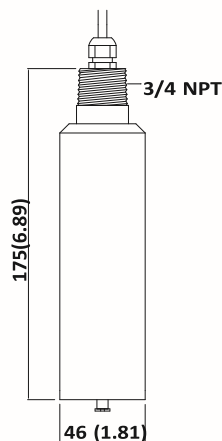
WATER SOLUTIONS

Sensor - Specification

Model	TCSS-200N
Method	IR LED 880nm Scattering (45)
Range	0~2,000 mg/L (ppm) or User Spec.
Sensor Material	PPS or STS316L (Wiper : Rubber)
Temp. Sensor	PT 1000 ohm
Temp. Condition	0~80°C
Pressure. Condition	Max. 10kgf/cm ²
Cleaning Method	Wiper
Holder Type	Submersion Type
Holder Material	PVC/PP/STS304
Holder Length	Pipe: 500mm, 2M(Std.) or User Spec. Chain Type : 5M(Std.)
Cable Length	20M(65.6ft)
IP Rating	IP68
Application	Effluent Water, Waste Water Treatment
Additional Function	RS-232C Communication Function Built-in



Dimensions



TCSS-200N



+61 (03) 7035 6313



info@igswater.com



www.igswater.com



IGS Asia Pacific,
Ground floor
470 St Kilda Rd
Melbourne, VIC 3000, AUS

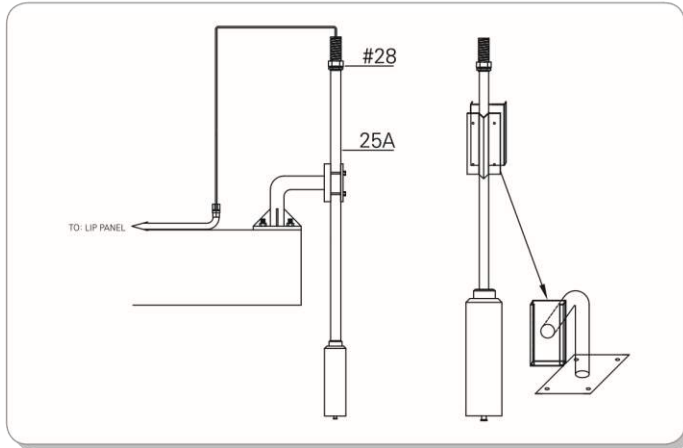




IGS ASIA PACIFIC

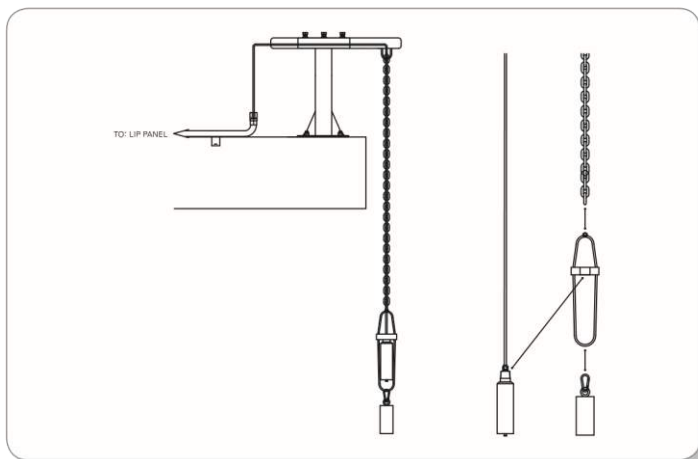
WATER SOLUTIONS

Submersion Type Installation



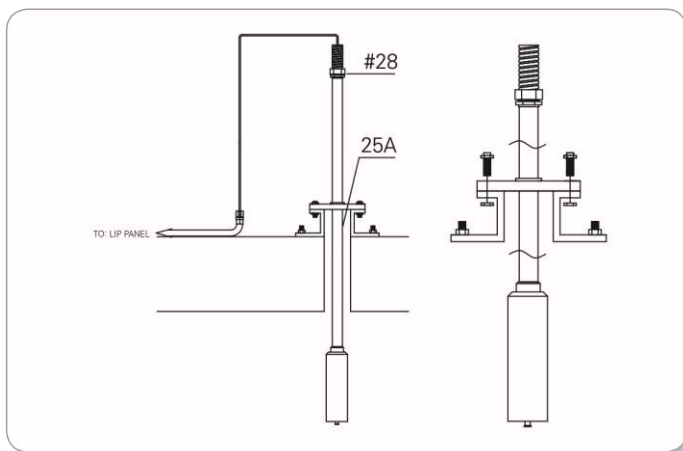
Pipe Type

- Apply to Wastewater Treatment Process
- Pipe Type Submersible Holder
- Fix a Pipe by Exclusive Use Bracket
- Cleaning System Optional
- Holder Length Can be Available User's Spec.
- Holder Length Need 3M More, Encourage Chain Type
- Pipe Length 1M, 2M or More Increase Can be Possible.
- Pipe Material : PVC/PP(Std.), STS304(Optional).
- Bracket Material : STS304.



Chain Type

- Applied at Installation In Deep Water
- Pipe Type Submersible Holder
- Fix a Pipe by Exclusive Use Bracket.
- Cleaning System Optional
- This Holder Need When Installate in Deep Water
- Hang Weight at the Bottom of Sensor.
- Easy to Carry
- Chain Length : 5M.
- Chain Material : STS304
- Bracket Material : STS304.



Flange type

- Flange Type Submersible Holder
- The Upper Part of Enclosed Tank, Flush Type Underground Sewage Disposal Plant
- The Choice of Flange Type Can be Available
- Provide Flange Mounted Pipe
- Flange Can be Available Fixed/Height-Adjustable Type
- Cleaning System Optional
- Holder Length Can be Available User's Spec
- Pipe Length 1M,2M or More Increase Can be Possible.
- Pipe Material : PVC/PP(Std.),STS304(Option).
- Flange Material : PVC/PP(Std.),STS304(Option)
- Bracket Material : STS304.



+61 (03) 7035 6313



info@igswater.com



www.igswater.com



IGS Asia Pacific,
Ground floor
470 St Kilda Rd
Melbourne, VIC 3000, AUS





IGS ASIA PACIFIC
WATER SOLUTIONS

On-Line Water Quality System Mixed Liquor Suspended Solids Analyzer & Sensor

DWA – 3000A/3000B MLSS Analyzer



DWA-3000A Series



DWA-3000B Series

Features

- Real Time Trend Analysis Function
- Microprocessor-Based Digital Program Controller
- Isolated DC (4-20/0-20/0-24mA) Output Transmission
- Automatic Cleaning Control Function
- Low-Cost For User Satisfaction
- CE Mark Accredited



Specification

	DWA-3000A Series	DWA-3000B Series
Power	AC 110V / 220V , 50/60Hz	
Channel	Single Channel	
Accuracy	± 2% (of Full Scale)	
Reproducibility	± 2% (of Full Scale)	
Resolution	0.001 mg/L	
Response Time	90 Sec (90% Saturation)	
Analog Output	4~20mA DC (Std.) / 0~20mA, 0~24mA (Opt.) / Dual Communication Output	
Digital Output	RS-232C (Std.) , RS-485 (Opt.)	
Relay Output	(HH,H,L,LL) & Cleaning	High, Low, Selection & Cleaning
Temp. Range	0~70°C	
Relative Humidity	Max. 90% (Non-Condensing)	
Display	5 Inch Graphic LCD(160X128), Trend Graph, Measuring Value, Measuring Status, Unit	
IP Rating	IP65 (NEMA 4X)	
Size	240(W) X 185(H) X 115(D)	155(W) X 155(H) X 138(D)
Installation	Wall Mounting	DIN 144 Panel Mounting



+61 (03) 7035 6313



info@igswater.com



www.igswater.com



IGS Asia Pacific,
Ground floor
470 St Kilda Rd
Melbourne, VIC 3000, AUS





IGS ASIA PACIFIC

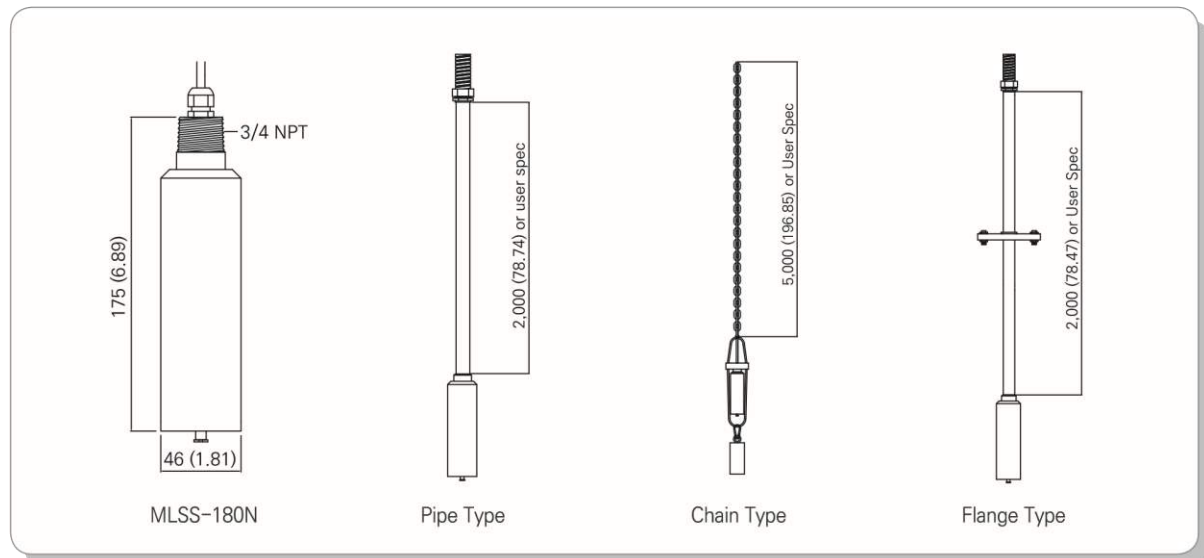
WATER SOLUTIONS

MLSS Sensor – Specification

Model	MLSS-180N
Method	IR LED 880nm Scattering (45)
Range	0~20,000 mg/L (ppm) or User Spec
Temp. compensation	PT 1000 ohm
Sensor Material	PPS or STS316L (Wiper : Rubber)
Temp. Condition	0~80°C
Pressure. Condition	Max. 10kgf/cm ²
Cleaning Method	Wiper
Cable Length	20M(65.6ft)
IP Rating	IP68
Holder Type	Submersion Type (Pipe/Chain/Flange Type) User Spec.
Holder Material	Pipe / Flange Type : PVC/PP/STS304 User Spec. Chain Type : STS304
Holder Length	Pipe : 500mm, 2M(Std.) or User Spec. Chain Type : 5M(Std.)
Additional Function	RS-232C Communication Function Built-In



Dimension & Holder Type



+61 (03) 7035 6313



info@igswater.com



www.igswater.com



IGS Asia Pacific,
Ground floor
470 St Kilda Rd
Melbourne, VIC 3000, AUS

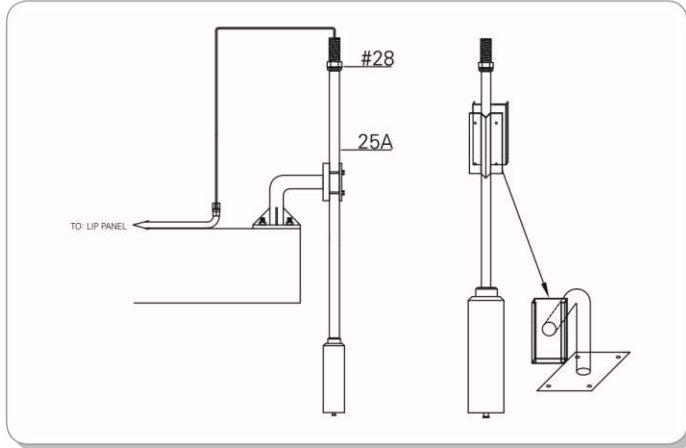




IGS ASIA PACIFIC

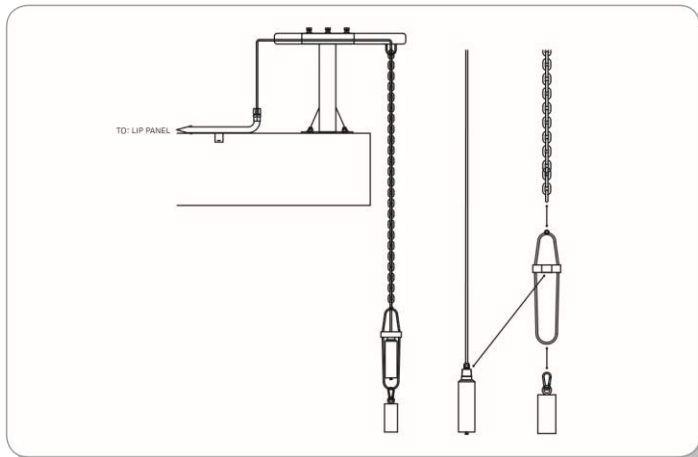
WATER SOLUTIONS

I Submersion Type Installation



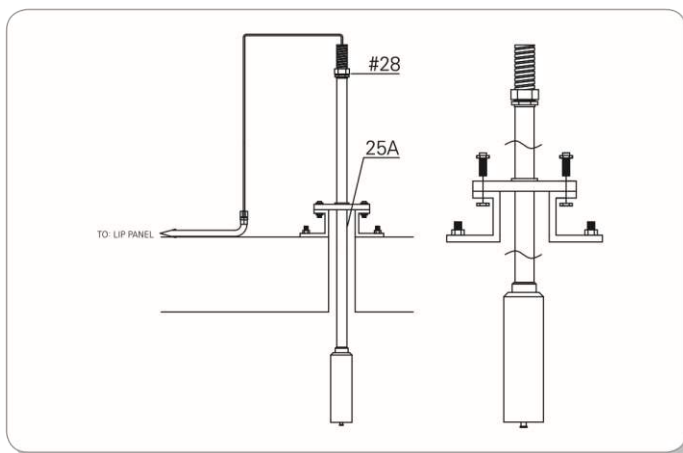
Pipe Type

- Apply to Wastewater Treatment Process
- Pipe Type Submersible Holder
- Fix a Pipe by Exclusive Use Bracket
- Cleaning System Optional
- Holder Length Can be Available User's Spec.
- Holder Length Need 3M More, Encourage Chain Type
- Pipe Length 1M,2M or More Increase Can be Possible.
- Pipe Material : PVC/PP(Std.), STS304(Optional).
- Bracket Material : STS304.



Chain Type

- Applied at Installation in Deep Water
- Pipe Type Submersible Holder
- Fix a Pipe by Exclusive Use Bracket.
- Cleaning System Optional
- This Holder Need When Installate in Deep Water
- Hang Weight at The Bottom of Sensor.
- Easy to Carry
- Chain Length : 5M.
- Chain Material : STS304
- Bracket Material : STS304.



Flange Type

- Flange Type Submersible Holder
- The Upper Part of Enclosed Tank, Flush type Underground Sewage Disposal Plant
- The Choice of Flange Type Can be Available
- Provide Flange Mounted Pipe
- Flange Can be Available Fixed/Height-Adjustable Type
- Cleaning System Optional
- Holder Length Can be Available User's Spec
- Pipe Length 1M,2M or More Increase Can be Possible.
- Pipe Material : PVC/PP(Std.), STS304(Option).
- Flange Material : PVC/PP(Std.), STS304(Option)
- Bracket Material : STS304.

+61 (03) 7035 6313
info@igswater.com
www.igswater.com

IGS Asia Pacific,
Ground floor
470 St Kilda Rd
Melbourne, VIC 3000, AUS





On-Line Water Quality System Turbidity Analyzer & Sensor

DWA – 3000A/3000B Turbidity Analyzer



DWA-3000A Series



DWA-3000B Series

Features

- Real Time Trend Analysis Function
- Microprocessor-Based Digital Program Controller
- Isolated DC (4-20/0-20/0-24mA) Output Transmission
- Automatic Cleaning Control Function
- Low-Cost For User Satisfaction
- CE Mark Accredited



Specification

	DWA-3000A Series	DWA-3000B Series
Power	AC 110V / 220V , 50/60Hz	
Channel	Single Channel	
Accuracy	± 1% (of Full Scale)	
Reproducibility	± 1% (of Full Scale)	
Resolution	0.0001 NTU	
Response Time	60 Sec (90% Saturation)	
Analog Output	4~20mA DC (Std.) / 0~20mA, 0~24mA (Opt.) / Dual Communication Output	
Digital Output	RS-232C (Std.), RS-485 (Opt.)	
Relay Output	(HH,H,L,LL) & Cleaning	High, Low, Selection & Cleaning
Temp. Range	0~70°C	
Relative Humidity	Max. 90% (Non-Condensing)	
Display	5 Inch Graphic LCD(160X128), Trend Graph, Measuring Value, Measuring Status, Unit	
IP Rating	IP65 (NEMA 4X)	
Size	240(W) X 185(H) X 115(D)	155(W) X 155(H) X 138(D)
Installation	Wall Mounting	DIN 144 Panel Mounting



+61 (03) 7035 6313



info@igswater.com



www.igswater.com



IGS Asia Pacific,
Ground floor
470 St Kilda Rd
Melbourne, VIC 3000, AUS

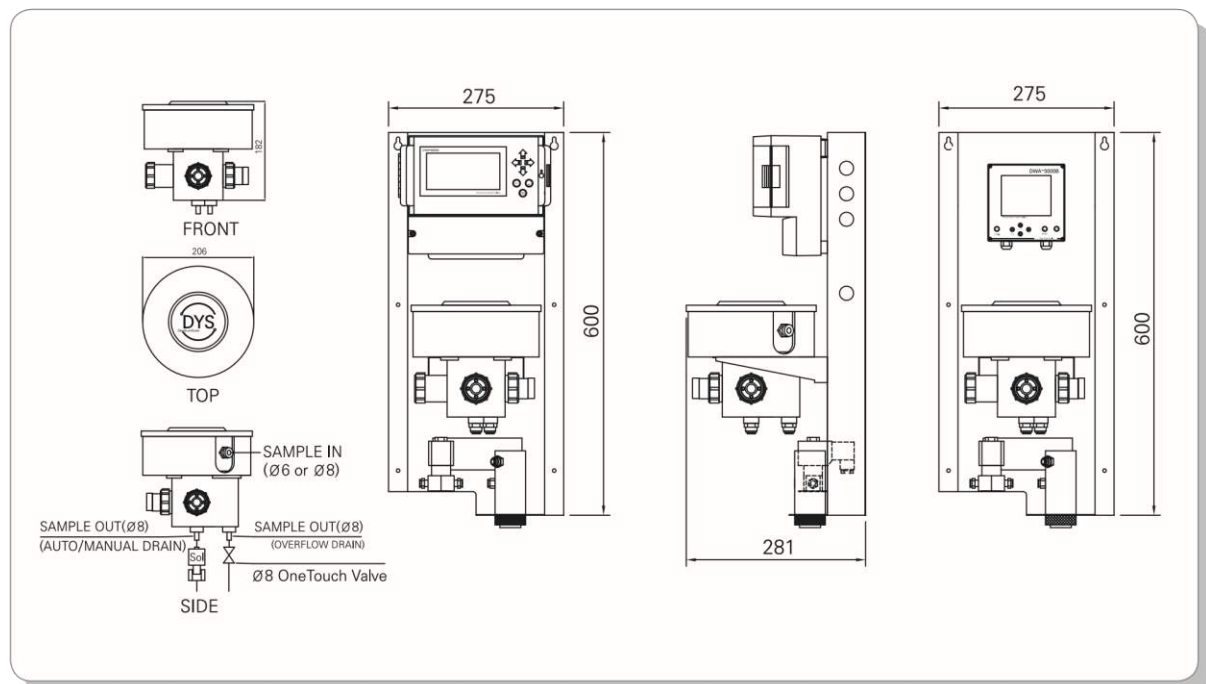




Turbidity Sensor – Specification

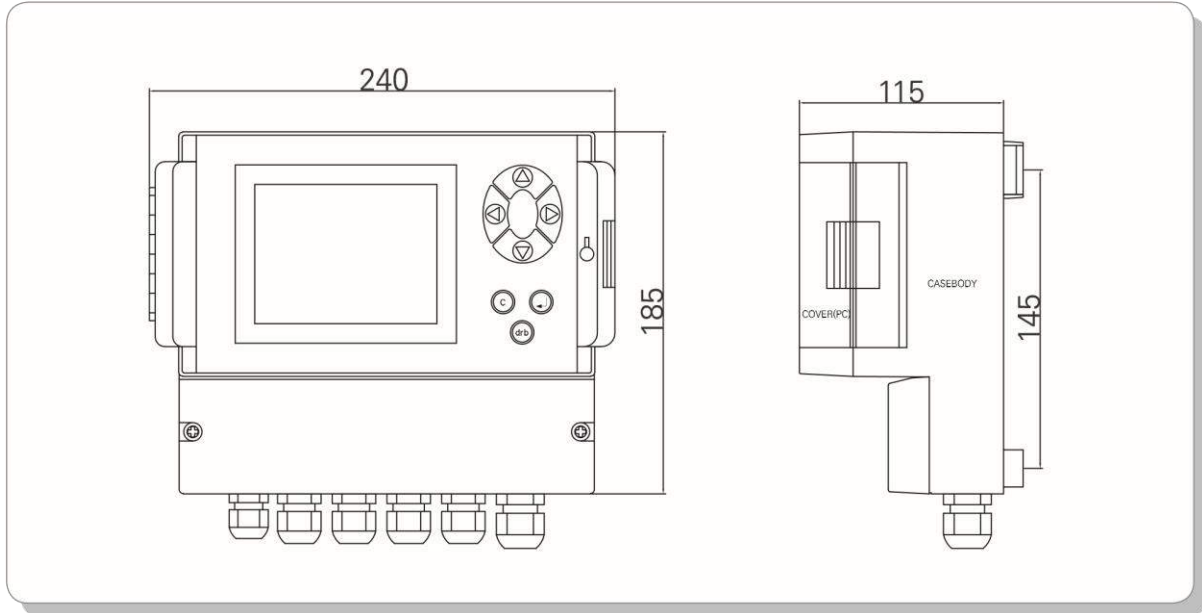
Model	TURB-900 (Purification, Ultrapure Water)	TURB-9100 (Raw Water)
Method	IR LED 880nm Scattering (90°)	
Range	0~10 NTU (Std.) or User Spec.	0~100, 0~400 NTU or User Spec.
Sensor Material	Acetal, Sapphire	
Temp. Condition	0~80°C	
Pressure Condition	Max. 3kgf/cm ²	
Cleaning	Auto Drain Cleaning	
Measurement Type	Sampling Method	
Bubble Removal Method	Bubble Track(Elimination Air Bubble)Structure Before Inflow Sensing Module	
IN - Fitting	One Touch Connector (6/8mm Air Hose)	
OUT - Fitting	One Touch Connector (12/16mm Air Hose)	
Application	Purification Plant, Power Plant, Filter Bed Process	Raw Water, Sewage Treatment Discharging Process
Installation	Wall Mounting	
Accessories	Base Plate, Acrylic Cistern	

Dimensions & Installation

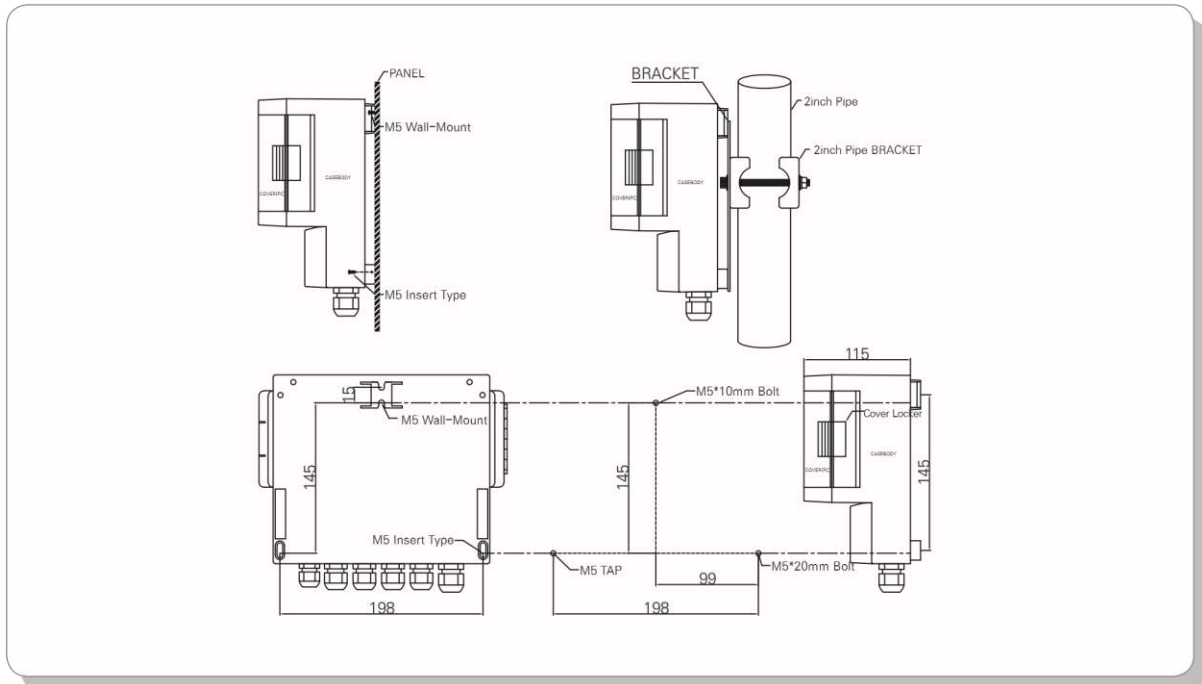




DWA-3000A Series Dimension



Installation



+61 (03) 7035 6313



info@igswater.com



www.igswater.com

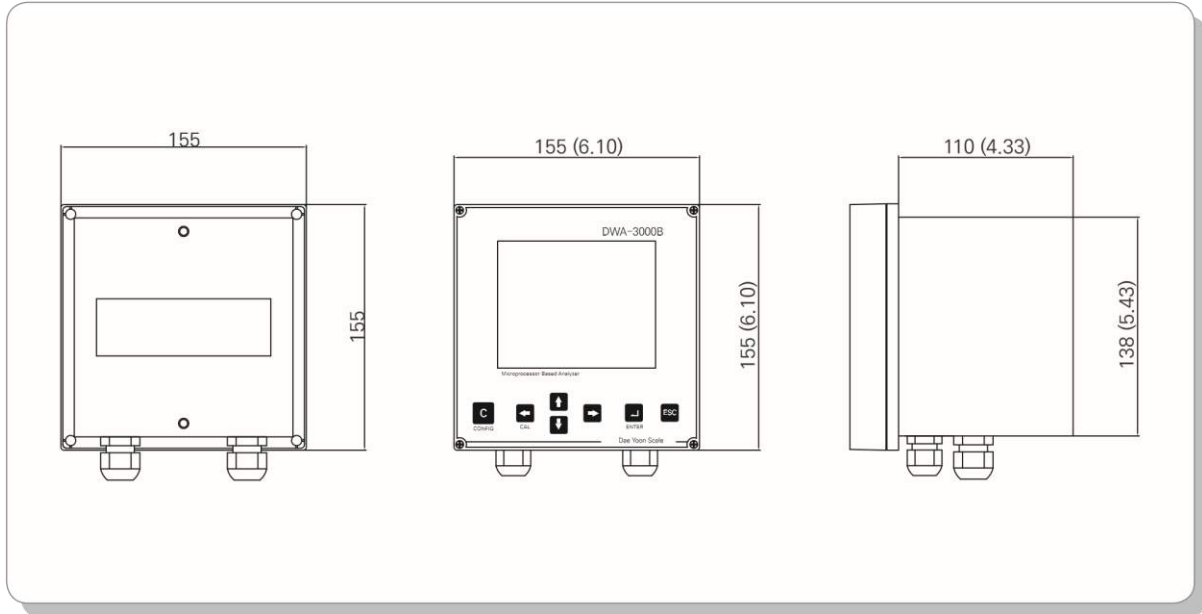


IGS Asia Pacific,
Ground floor
470 St Kilda Rd
Melbourne, VIC 3000, AUS

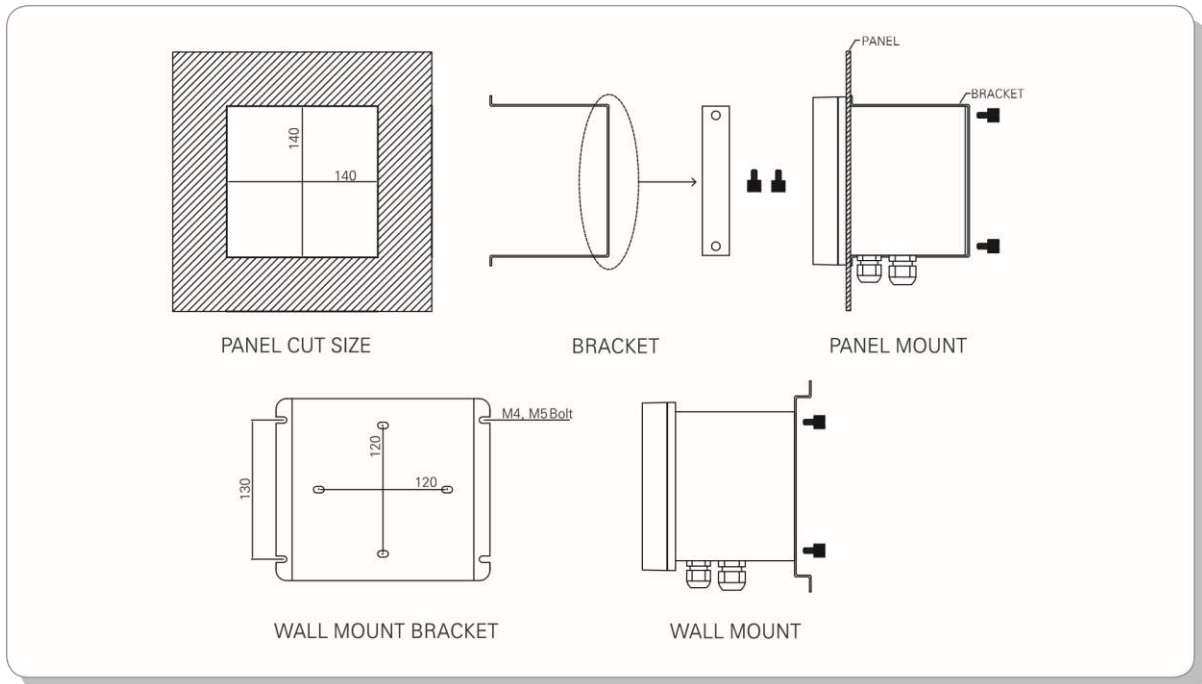




I DWA-3000B Dimension



I Installation



+61 (03) 7035 6313



info@igswater.com



www.igswater.com

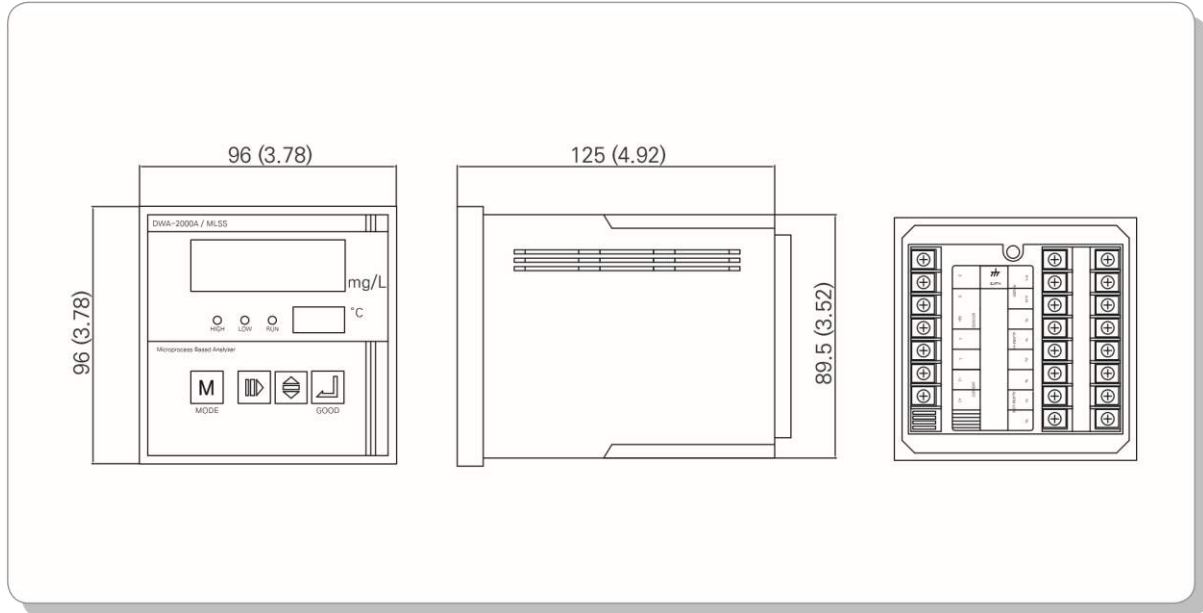


IGS Asia Pacific,
Ground floor
470 St Kilda Rd
Melbourne, VIC 3000, AUS

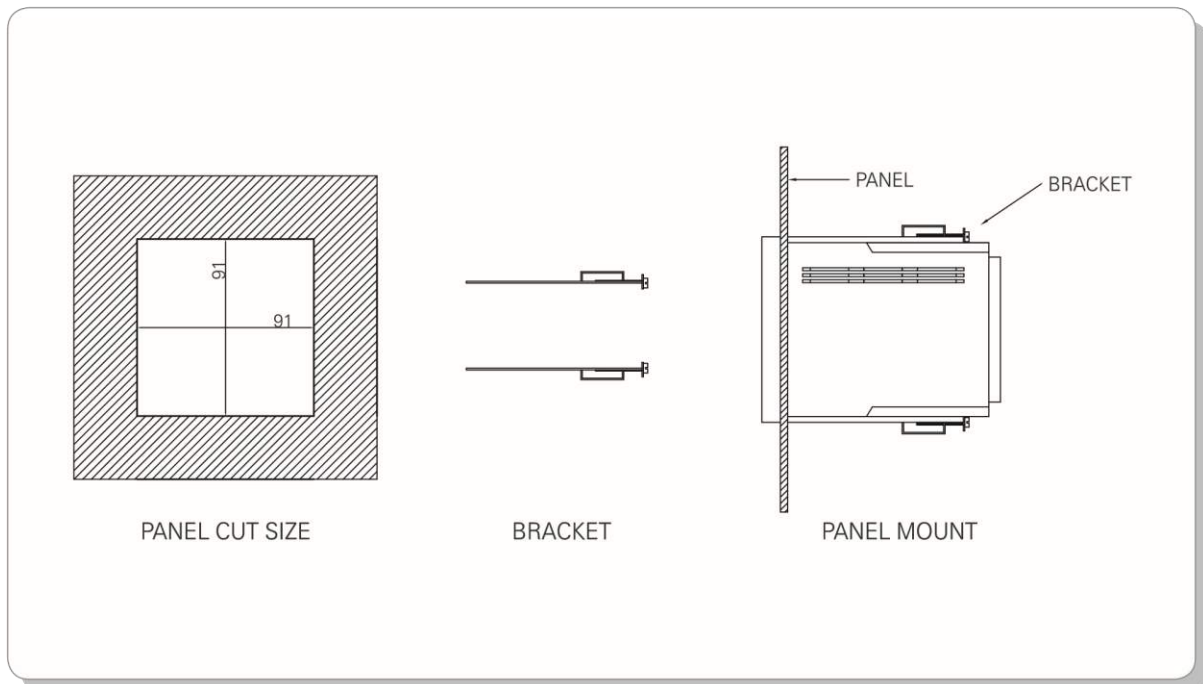




I DWA-2000A Dimension



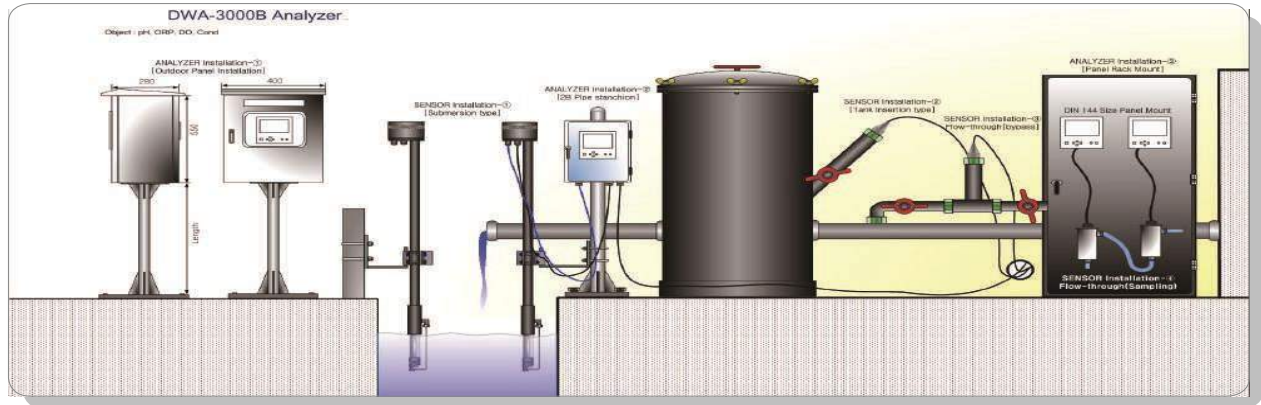
I Installation



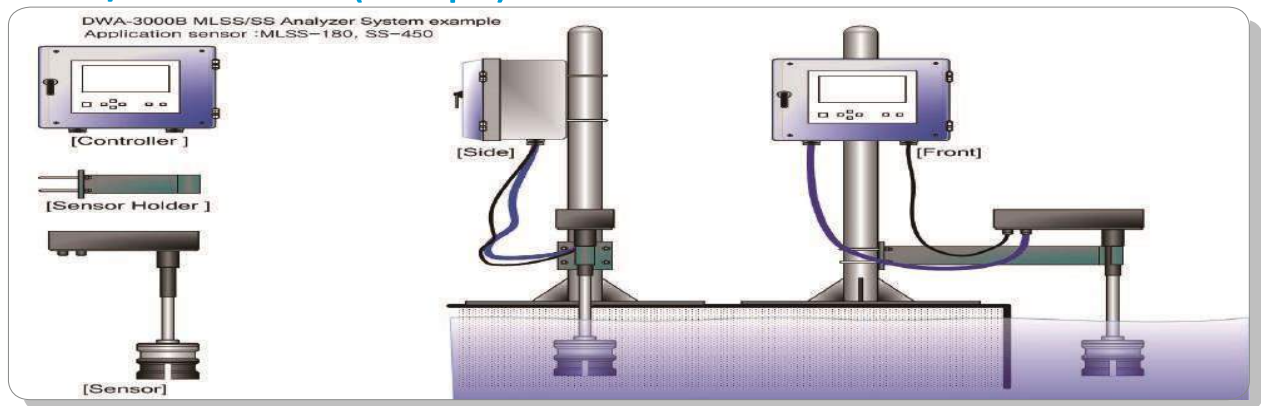


Installation Example

pH/ORP/DO/COND Installation (Example)



MLSS/SS Installation (Example)



Turbidity Installation (Example)





IGS ASIA PACIFIC
WATER SOLUTIONS



Digital *Marine Tester* (DMT-10)

Specific Gravity / Salinity / Temperature

3 IN 1

Specific Gravity : 1.000 ~ 1.037

Salinity(ppt) : 0ppt ~ 50ppt

Temperature(°C or °F)



- Please be fully aware of Operation Manual before using this one
- Accurate measurement depends on careful calibration
- * Measures Specific Gravity/Salinity(ppt)/Temperature(°C or °F)
- * Handheld Digital Tester : Easy to read Digital LCD & operate
- * Automatic Temperature Compensation & Waterproof probe
- * Laboratory grade for precision accuracy
- * Fast-Response : Instantly get results within 10 sec.
- * Battery Saving Function : Automatically turns off within 1 min.



+61 (03) 7035 6313



info@igswater.com



www.igswater.com



IGS Asia Pacific,
Ground floor
470 St Kilda Rd
Melbourne, VIC 3000, AUS





IGS ASIA PACIFIC
WATER SOLUTIONS

CE **Handheld**
Digital Salt Tester (DMT-20)
Salt / Temperature



“This product measures the concentration of dissolved Salt in water using this Meter”

► **Technology : 2 in 1 Functions**

- Measurement : Salt(%) / Temp(°C / °F)
- Range : 0.0 ~ 5.0% (Salt)
- Operating Temp : 0°C ~ 70°C (32°F ~ 158°F)

► **Application Fields : (Home / Food Industry / Health-Care / Industry)**

- 1) Indispensable for those with SALT health concerns
- 2) Preservation of fixed taste of food
- 3) Salt Amount of Food Measurement



+61 (03) 7035 6313



info@igswater.com



www.igswater.com

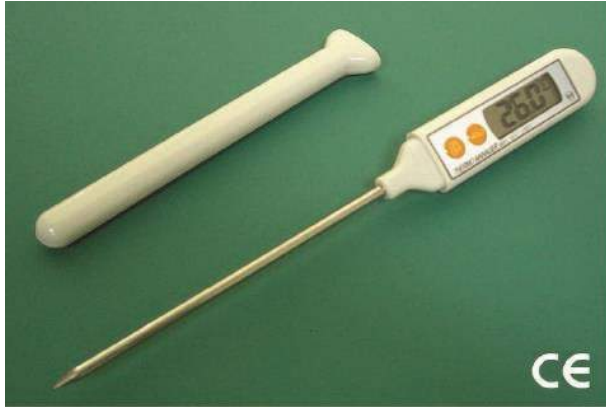


IGS Asia Pacific,
Ground floor
470 St Kilda Rd
Melbourne, VIC 3000, AUS



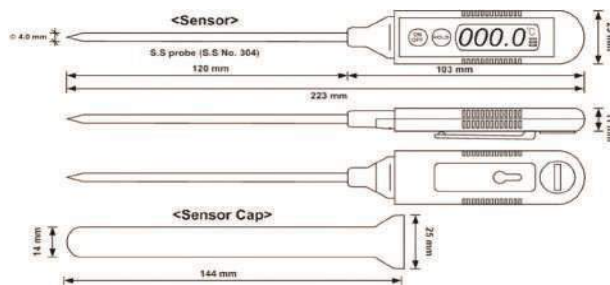


Digital Thermometer



Specification

- Range : -50°C~300°C (-58°F~572°F)
- Resolution : ±0.1°C
- Power : LR44 or LR1154 Button Cell (1.5V) x 1ea
- Battery Life : Abt.12 Months
Based on 2 Times Use Per Day
- Dimension / Weight : 25 x 11 x 223mm / Abt.35g
- Material : 1 → Sensor Probe : S.S No.304
2 → Body : ABS Plastic



Description

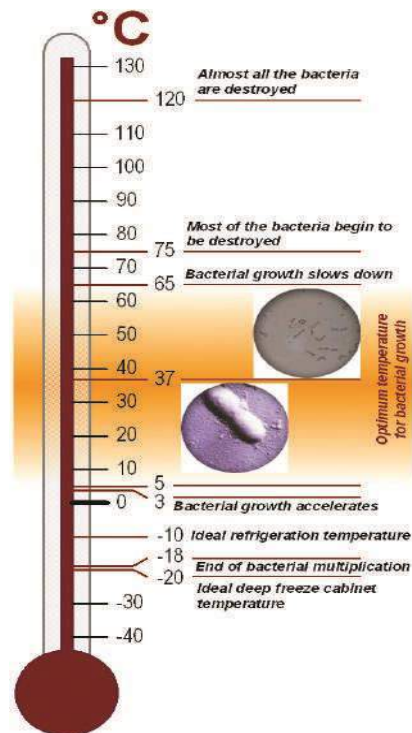
- This Meter Measures the Temperature In
- Liquids / Solids. (All Hot & Cold Fluids/Solids)

Application Fields

- Kitchen & Bakeries / - Oil for Frying
- Storage / Cold-Storage Foods Temp. of Freezing
- Freezers / Coolers and Heating Systems
- Hydroponics & Aquaculture
- Motor Maintenance, Generator Systems etc.
- Surface of the Earth Temp of Flower / Flowerpot

Feature

- Very Competitive Price (Under Bottom Price)
- Complete With Hand-Held Type
- Durable ø4.0 S.S Probe (S.S NO.304)
- Wide Temp Range & Large LCD Display
- Fast Response
- CE Mark Accredited



+61 (03) 7035 6313



info@igswater.com



www.igswater.com



IGS Asia Pacific,
Ground floor
470 St Kilda Rd
Melbourne, VIC 3000, AUS



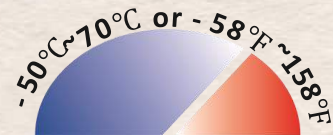


IGS ASIA PACIFIC
WATER SOLUTIONS

Digital Hygro-Thermometer

HYGRO-THERMOMETER

2 Displays Humidity Temp.



2 IN 1

- ▶ Humidity
- ▶ Temperature

- Measurement :
- Humidity : 20~95% RH
- Temp. : -30°C~-50°C(-22°F~122°F)

- Jumbo 2 Display LCD
- °C/°F Exchange
- Flip-Out Stand : Desk-Top/Wall Mount
- Power : AAA 1.5V×1EA

Humidity
Temp.



+61 (03) 7035 6313
info@igswater.com
www.igswater.com

IGS Asia Pacific,
Ground floor
470 St Kilda Rd
Melbourne, VIC 3000, AUS





IGS ASIA PACIFIC
WATER SOLUTIONS

CE

NEW

*Ideal for Construction sites /
Ready-Mixed Concrete works...*

CHLORIDE-METER (DY-2501A)

< Field Test System >



Measures the content of Chloride contained in concrete ”

- | Range : 0.001% ~ 1.500% (Cl)
- | Automatic Temp. Compensation (ATC)
- | All-Function-In-One (Calibration/Measurement/Printing etc.)
- | Dual Digital Digit LCD
- | Memory Recalling holds 100 Readings.
- | Easy to carry & operate (Portable)
- | Fast Results : Abt. 2 Min



Daeyoon Scale Industrial Co., Ltd.



+61 (03) 7035 6313



info@igswater.com



www.igswater.com



IGS Asia Pacific,
Ground floor
470 St Kilda Rd
Melbourne, VIC 3000, AUS





IGS ASIA PACIFIC
WATER SOLUTIONS

CE

Portable

< Field Test System >

CHLORIDE-METER (DY-2501B)

For Hardened Concrete

*"Both Hardened & Fresh Concrete
can be tested with this system for chloride"*

- Measurement:

- Content of Acid Soluble chloride (%)
- Content of Water-Soluble chloride (%)
- Total Volume of chloride (kg/m^3)

- Range: 0.0005 % ~ 2.0000 % (Cl^-)

- Measuring Method: By Combi chloride ISEs

- All Function-In-One

- Automatic Temp. Compensation (ATC)

- Memory Recalling holds 100 Readings

- Digital Digit LCD

- Fast Response: Abt. 2 Min

- CE Mark Acquired



Daeyoon Scale Industrial Co., Ltd.

#207 Ace Techno Tower(II), 197-7 Guro3-dong, Guro-gu, Seoul, Korea (152-848)

Tel: 82-2-858-6870

Fax: 82-2-866-9422

E-mail: chloride@kita.net

<http://chloride.en.ecplaza.net>



+61 (03) 7035 6313



info@igswater.com



www.igswater.com



IGS Asia Pacific,
Ground floor
470 St Kilda Rd
Melbourne, VIC 3000, AUS

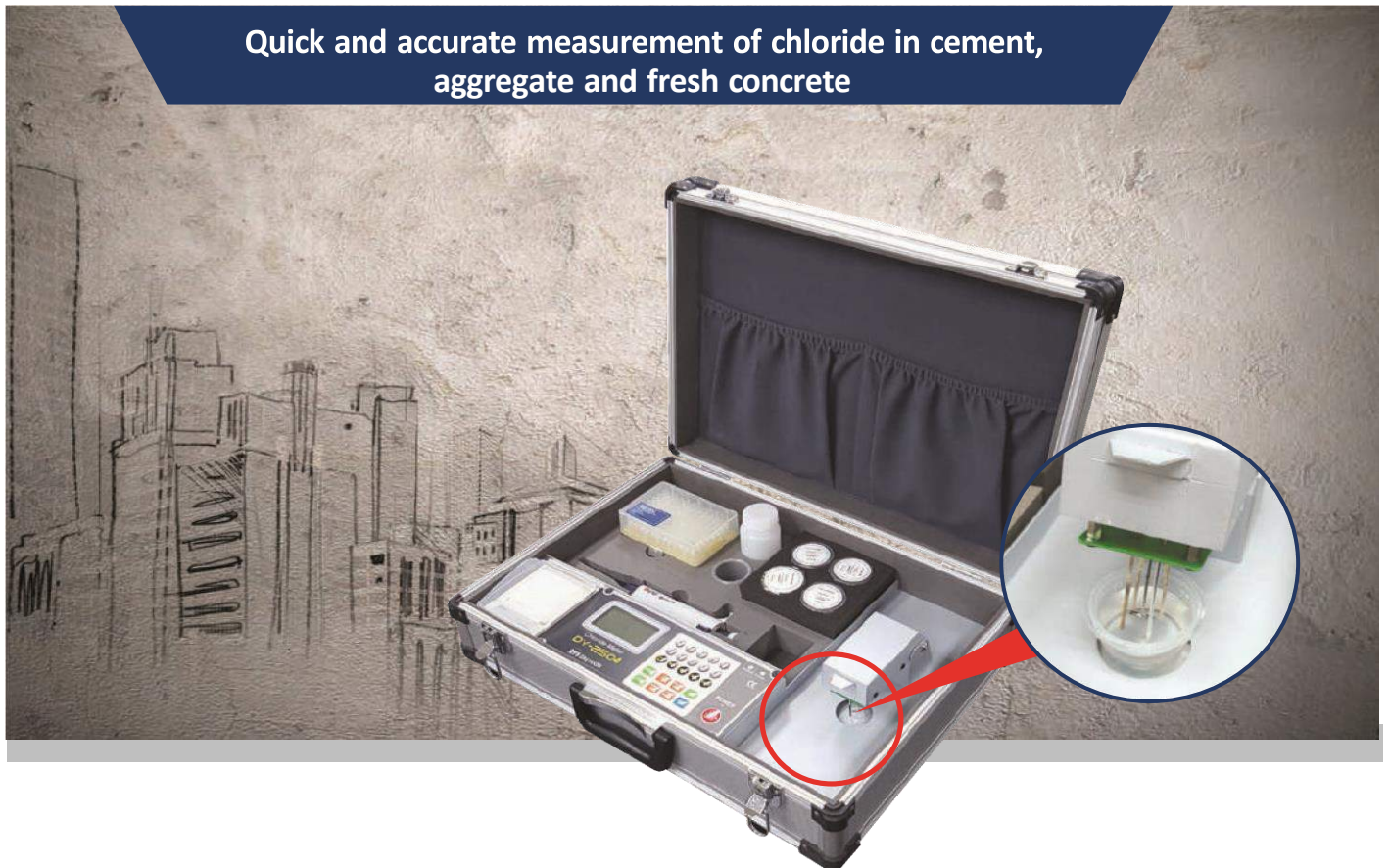




IGS ASIA PACIFIC
WATER SOLUTIONS

Coulometric Filtration based portable **CHLORIDE METER** DY-2504

Quick and accurate measurement of chloride in cement,
aggregate and fresh concrete



Before



After

- Coulometric Titration Based Portable Equipment
- Measurement Items
Chloride Content (%)
Total Chloride Content (kg/m³)
- Measurement Range 0.001% ~ 2.0%
- Small Sample Volume (0.2 mL)
- Remarkable Short Responses Time
(about 2 Minutes)
- Store Once Mode for Up to 100 Measurements
- Portable Type All-in-One
(Calibration, Measurement, and Printing etc.)
- Automatic Shutdown for Power Saving
- CE Certified



+61 (03) 7035 6313



info@igswater.com



www.igswater.com



IGS Asia Pacific,
Ground floor
470 St Kilda Rd
Melbourne, VIC 3000, AUS



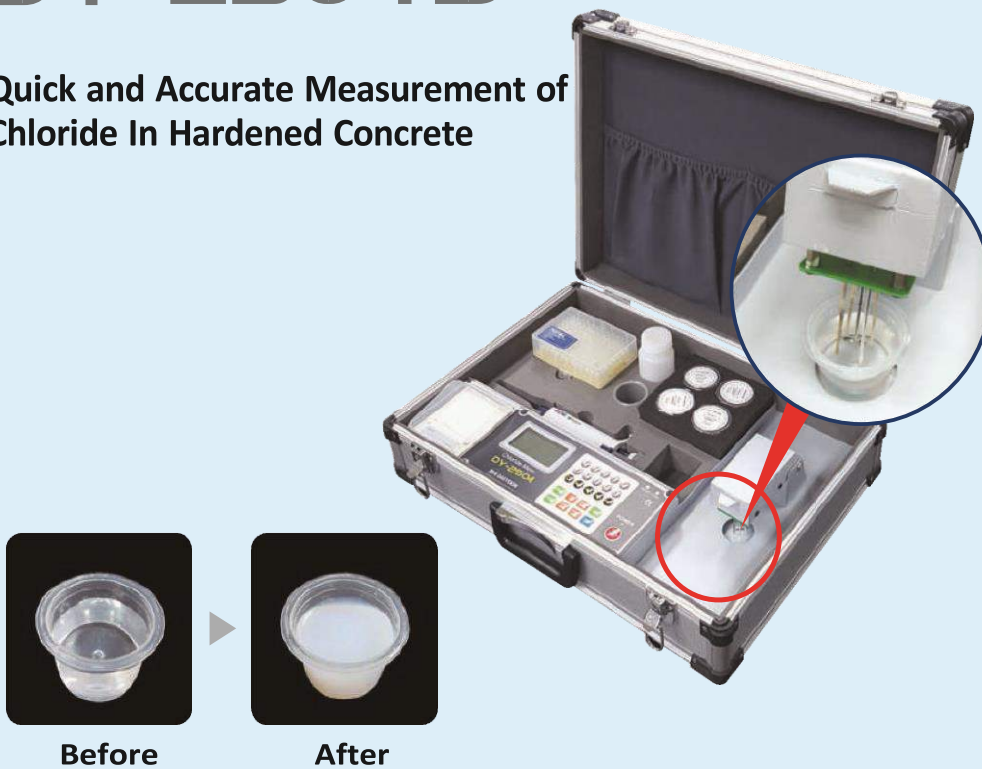


IGS ASIA PACIFIC
WATER SOLUTIONS

Coulometric Titration Based Portable Hardened Concrete

DY-2504B

Quick and Accurate Measurement of Chloride In Hardened Concrete



Before

After

- Coulometric Titration Based Portable Equipment
- Measurement Items
 - Acid-Soluble Chloride Content (%)
 - Water-Soluble Chloride Content (%)
 - Total Chloride Content (kg/
- Measurement Range
 - 0.001% ~ 1.0%
- Small Sample Volume (1mL)
- Remarkable Short Responses Time (about 2 Minutes)
- Store Once Mode for Up to 100 Measurements
- Portable Type All-in-One (Calibration, Measurement, and Printing etc.)
- Automatic Shutdown for Power Saving
- CE Certified

+61 (03) 7035 6313
info@igswater.com
www.igswater.com

IGS Asia Pacific,
Ground floor
470 St Kilda Rd
Melbourne, VIC 3000, AUS





IGS ASIA PACIFIC
WATER SOLUTIONS

〈Field Test System〉

Concrete Air Meter (DYA-107)



Washington Type

: Air meters are employed to supervise the effects of air entraining agents in a concrete mixture.

TECHNOLOGY

- Measuring Method : Water filled / No-Water
- Measuring Range : 0~10%
- Base Container : 7L, Lightweight cast Aluminium alloy
- Resolution :
Water filled : 0~8% > 0.1%, 8~10% > 0.2%
No-Water : 0~7% > 0.1%, 7~10% > 0.2%
- Accuracy : 0~7% ($\pm 0.1\%$)
7~10% ($\pm 0.2\%$)
- Gauge : Bourdon Tube Type Pressure Gauge
- Total Weight : Abt. 8kg



+61 (03) 7035 6313
info@igswater.com
www.igswater.com

IGS Asia Pacific,
Ground floor
470 St Kilda Rd
Melbourne, VIC 3000, AUS





IGS ASIA PACIFIC
WATER SOLUTIONS



Digital

<Field Test System>

Concrete Air-Meter (DY-300)

*– Quickly determine percentage of entrained Air in
Freshly mixed Concrete by Digital Digit in LCD –*

- Digital Measuring System
(By the pressure method)
 - With built in automatic electric Air compressor giving Air pressure & Keeping it constant all along the test (Max. 120.0 kPa / 20 Sec.)
 - Original Volume of Air is by the principle of Boyle's Law
 - Automatic Calibration : 2 points (0%, 4.5%)
 - Easy to read, operate and accuracy
- Capacity : 7 Liters
– Air Content Range : 0.0~9.9 % (0.00~9.99 % selectable)
– Accuracy : $\pm 0.1\%$ (2 Digit) / $\pm 0.05\%$ (3 Digit) @25°C
– Air Pressure Sensor : Ceramic Cell
Max. 200.0 kPa, Div : 0.1 kPa
– Power : Ni-MH×8 Pcs (Rechargeable)
– Display Meter Size/Weight: 120×110×125 mm/Abt. 1.1 kg



DaeYoon Scale Industrial Co., Ltd.

#207 Ace Techno Tower(II), 197-7 Guro3-dong, Guro-gu, Seoul, Korea (152-848)

Tel: 82-2-858-6870

Fax: 82-2-866-9422

E-mail: chloride@kita.net

http://chloride.en.eplaza.net



+61 (03) 7035 6313



info@igswater.com



www.igswater.com



IGS Asia Pacific,
Ground floor
470 St Kilda Rd
Melbourne, VIC 3000, AUS





IGS ASIA PACIFIC
WATER SOLUTIONS

Water Quality Measuring **ON-LINE** System

 +61 (03) 7035 6313
 info@igswater.com
 www.igswater.com

 IGS Asia Pacific,
Ground floor
470 St Kilda Rd
Melbourne, VIC 3000, AUS

